

ERIXON
B
F
SIMMENTALS

BULL & FEMALE SALE

Wednesday, February 28, 2018 at 1:00 pm

New Location - at the farm - Clavet, SK

ERIXON B M

SIMMENTALS BULL & FEMALE SALE

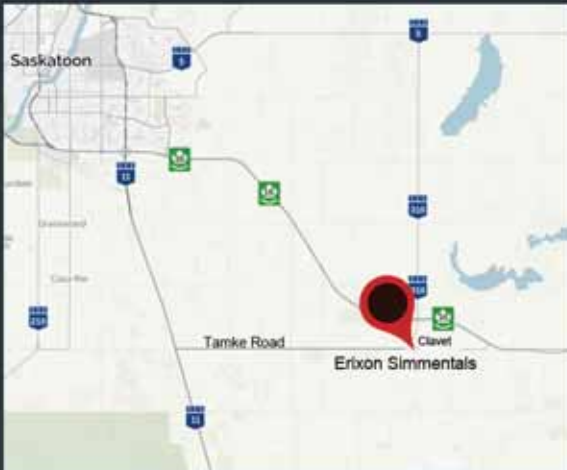
**WEDNESDAY
FEBRUARY 28, 2018
1:00 P.M.**

NEW LOCATION at the farm Clavet, SK

From Saskatoon: 8 miles south
on Hwy 11; turn at Coop Cardlock
(Tamke Road); 7 miles east

From the south on Hwy 11: 11 miles north of
Dundurn on Hwy 11, turn at Coop Cardlock
(Tamke Road); 7 miles east

From Hwy 16: Take the Clavet west access
road, go 1 mile south to the "T"
intersection, turn east, go 1/4 mile, then
follow the speed curve south for 2 miles



Offering

**38 Red Yearling Bulls
15 Black Yearling Bulls
1 Black Extra Age Bull
12 Replacement Heifers**

Welcome

On behalf of Dave and myself I would like to welcome fellow seed stock producers and commercial cattlemen to the Erixon Simmentals Bull & Female Sale.

It has been a very challenging, emotional, and yet rewarding year for us. First and foremost our boys Holden D. Erixon and Griffin D. Erixon were born at 29 weeks of age on Oct. 15th. A huge thank you goes out to the doctors, nurses and support staff at the Neonatal Unit at the Royal University Hospital. To all our family and friends that have stood by us and helped us out in multiple ways; Bob & Kim Erixon, Arden & Debbie Dust, Rob & Britney Erixon, Eric Boon, Brandon Dyck, Brayden Schmidt, and Andie Hadway. We would also like to thank all of those who graciously offered a helping hand. We may not have taken you up on the offer, but we sincerely appreciate your thoughts.

Secondly, we have accomplished another goal of ours. The 2018 addition of the sale is coming home! The sale barn and new pens will be set up and finished for February 28th! Please join us on the farm by Clavet. The bulls will continue to sell by live auction and ran through the sale ring for your appraisal.

The herd is built around strong cow families that have been consistent over the years. We believe in the power of the momma cow, and her ability to produce by utilizing forages. Cattle are our sole income and each and every cow on the farm must pull her own weight. Our bulls and heifers come to you out of the industry's leading A.I sires and two of our own walking bulls. We take great pride in striving to find exciting new and upcoming sires. Some of the proven herdsires that are represented again this year are; Dealer, Sheriff, Reckless, Fortune, Investor and Capone. We are very pleased with the job the new kids on the block are doing; Westcott, Orbit, and Vision. We are most proud that some of these sires were born and raised right here! We are excited to get the bulls out and working for our customers. There is a larger selection of black bulls for the sale, and one extra age bull. All the pictures were taken in December. Due to the fact that we were a tad bit busier than other years, we didn't get all the bulls pictured. We assure you that the bulls without pictures are every bit as good! We are committed to the industry and are always striving to raise the best stock possible.

All the bulls and heifers are on a full herd health program and have been poured with Ivomec. The calves see no creep feed or silage and are developed on a high roughage ration that promotes growth and longevity.

We look forward to hosting all our past, present and future customers at our sale facility on the farm. Join us for lunch prior to the sale and after for socializing and refreshments. If you have any questions feel free to give us a call or stop by the farm.

Cheers folks!

Dave & Krista
Box 156, Clavet, SK S0K 0Y0
Dave's cell: 306 270-2893
Krista's Cell: 306 270-1263
erixonsimmentals@sasktel.net
www.erixonsimmentals.com



Sale Day Information

Sale Day Phones:

Dave Erixon..... 306.270.2893
Krista Erixon 306.270.1263
Scott Bohrsen..... 403.370.3010
Taylor Richards..... 306.821.4169
Rob Voice 306.361.6775
Martin Bohrsen..... 306.220.7901

Sale Staff

Auctioneer:

Ryan Dorran 403.507.6483

Ringmen:

Mark Stock 403.357.8104
Craig Flewelling 403.556.0515

Delivery Options

Option A: \$50 off per lot if picked up sale day.

Option B: Free on bulls to central points in Saskatchewan, Alberta and Manitoba. In most cases we will deliver the bull to your yard. Trucking will start immediately after the sale at seller's convenience.

Option C: Bulls may be left at the farm free of charge until April 15. A \$3.00/day fee will apply after that and bulls will then need to be picked up or delivery arrangements made with the seller.

We insist all purchases be insured while at Erixon Simmentals. All bulls and females become the risk of the buyer once sold. Erixon Simmentals will provide the utmost care of the animals that return to the farm.

Semen Collection

Erixon Simmentals reserves the right to collect semen on any bull sold through this sale. The semen collection will be at Erixon Simmentals expense and the buyers convenience. Any semen collected will be for Erixon Simmentals in herd use only.

Win a \$2000 Sale Credit

Purchase a bull from any current Saskatchewan member, and when the registration papers are transferred, your name is entered to win a \$2000 sale credit! The draw will be made at the SSA's annual general meeting in July and the lucky winner will have one year to use the credit at any public auction or private sale on bulls or females purchased from any current SSA member.

Guarantee:

All animals will carry the standard breeding guarantee as specified by the Canadian Simmental Association. If a problem occurs with your purchase, please notify us as soon as possible. A bull of equal value and quality will be supplied or a credit given towards the purchase of another Erixon bull.

U.S. Buyers

Erixon Simmentals will do necessary testing at cost for export on bulls and females.

Insurance:

Cassie Dorran, Dorran Marketing Inc. 403-507-5953

Accommodations:

Home Inn & Suites, Saskatoon South: 306.657.4663

CONSISTENCY runs extremely deep in the 2018 bulls at Erixon Simmentals! We encourage you to attend this year's sale at the farm in Clavet to take in their stoutest offering to date that will be auctioned in their beautiful new barn. This past year has been very hectic for the Erixon family as the early addition of Holden & Griffin to the family, along with a new sale barn built on the farm. This young family has the passion, work ethic and talent amongst any others and the future is very bright at Erixon Simmentals.

As we toured through the Erixon pen throughout last summer and into the fall and winter, each and every stop impressed us with the consistency that is on offer. Large sire groups are on hand and the cut of these bulls will impress the pickiest commercial and purebred breeders alike. They are always seeking the freshest and most sought after genetics within the breed and after Westcott was the talk of the spring 2016 and commanded \$165,000, they purchased one of the first packages available. His sons have the natural shape, muscle, hair and performance to increase ROI in any program. We feel that he has worlds of future and this first set of bulls are the kind to bank on and invest in to increase power within your program. Pretty Reckless has been the backbone of this program in recent years and is highly regarded in the Simmental sectors as a consistent bull that will add power, length and marketability. He has once again left a set of sons that will be very well accepted for the sheer power and uniformity that they possess. The Capone sire group was very well accepted last year and many select sons on offer again along with Dealer who has been utilized in the AI program with much success. Orbit was a past CWA division champion for the Erixons and his sons are stout made with extra muscle and dimension. Sheriff is utilized successfully in the heifer pen and the influence of Investor, Grand Fortune and Vision is also influenced and twist in pedigree. As always, the open heifers on offer are strong and deep in quality and we feel you can invest with confidence.

Each and every year the Erixon family offers breed leading genetics and highly sought after cattle that are industry accepted. Each move they make is to better their product and increase ROI for the loyal customers that utilize their genetics. We hope you can attend the sale at their farm and take in the new facility backed by great hospitality and a consistent group of sale cattle. If you can't make it sale day, feel free to contact us and we will represent your needs in a professional manner. See you in Clavet on February 28!



Scott Bohrsen
403-370-3010



Taylor Richards
306-821-4169



Darryl Snider
780-385-5561



Geoff Anderson
306-731-7921



Martin Bohrsen
306-220-7901



Rob Voice
306-361-6775



Matt Criddle
306-539-6934

PLEASE JOIN US FOR LUNCH ON SALE DAY

Sponsored by:



BOHRSON
MARKETING SERVICES



Homo Polled
Purebred Male

ERIXON
Sad 6E

CA-PG1198678
BOBE 6E
Jan 6, 2017

6E is a bull to be desired for many reasons; his ease of fleshing ability, true breed character, and docility. He is a true tank that will push the scale down come sale day! This bull sure has some middle bred into him, he is really deep and soggy made.
Homozygous Polled

Act. BW	Adj. 205 wt	Adj. 365 wt	CE	Canadian Simmental Association				EPD's	Milk
102	832	1480	3	BW	WW	YW	MCE	MWW	
				6	77.7	109.1	10.8	60.3	
								21.4	

ERIXON ORBIT 20C
ERIXON LADY 4X

COME AS U R RED ROCKET
ERIXON LADY 18Y
TNT GUNNER N208
ERIXON LADY 59S



Homo Polled
Purebred Male

ERIXON
Sad 7E

CA-PG1198749
BOBE 7E
Jan 6, 2017

It makes us proud as breeders to see the first calf heifers do every bit of a job that the mature cow herd does. It is mandatory here for a heifer to breed and raise a bull of quality to sit in this very sale. 31C has done exactly as she was asked to do. Sheriff has proven himself to be a true calving ease sire.
Homozygous Polled
Can be used in the heifer pen

Act. BW	Adj. 205 wt	Adj. 365 wt	CE	Canadian Simmental Association				EPD's	Milk
78	804	1262	15.5	BW	WW	YW	MCE	MWW	
				-0.6	63.7	99.7	12	58.9	
								27	

KUNTZ SHERIFF 8A
ERIXON LADY 31C

KUNTZ MARSHALL 12Y
PEACOCK'S LI'L NETTIE 23Y
NUG ROYAL RED 324A
ERIXON LADY 4T



Polled
Purebred Male

ERIXON *Sad* 11E

CA-PG1198982
BOBE 11E
Jan 6, 2017

11E is really docile and is easily picked out among the group of bulls. He is a neat made bull that posses mass and phenomenal balance. He has been one of the stoutest bulls in the pen since day one. We believe that 11E is unique in his kind, and would be a great asset to many herds. He is right for the times. It sure is hard not to take a second look at his picture, it's a good one!



WFL WESTCOTT 24C
ERIXON LADY 114A

TNT 90 PROOF Z401
WFL SWEET LICIOUS 1044X
MRL RED FORCE 12U
ERIXON LADY 114Y

Act. BW	Adj. 205 wt	Adj. 365 wt	CE	Canadian Simmental Association EPD's					
				BW	WW	YW	MCE	MWW	Milk
100	833	1543	5.8	5	74.2	112.6	7.3	63.5	26.4



Homo Polled Purebred Male

ERIXON *Sad* 12E

CA-PG1198915 BOBE 12E Jan 6, 2017

WFL WESTCOTT 24C
ERIXON LADY 64W

TNT 90 PROOF Z401
WFL SWEET LICIOUS 1044X
TNT GUNNER N208
ERIXON LADY 17M

Act. BW	Adj. 205 wt	Adj. 365 wt	CE	Canadian Simmental Association EPD's					
				BW	WW	YW	MCE	MWW	Milk
97	733	1325	8	3.9	65.6	97.1	12.2	56.9	24.1

64W is a good milking cow that has been consistent over the years. 12E is white faced and has extra length and size. He would add some frame and stretch to a group of feeder calves.
Homozygous Polled



Homo Polled Purebred Male

ERIXON *Sad* 15E

CA-PG1198763 BOBE 15E Jan 7, 2017

KUNTZ SHERIFF 8A
ERIXON LADY 34C

KUNTZ MARSHALL 12Y
PEACOCK'S LI'L NETTIE 23Y
SUNNY VALLEY DAKOTA 9Z
ERIXON LADY 57Z

Act. BW	Adj. 205 wt	Adj. 365 wt	CE	Canadian Simmental Association EPD's					
				BW	WW	YW	MCE	MWW	Milk
82	804	1370	12.7	0.3	63.6	100.6	10.8	62.5	30.7

This is our second calf crop out of the calving ease A.I sire Sheriff. We used him very successfully in the heifer pen. The calves were born with light weights, but did they ever surprise us. They have grown and developed into a very solid group of bulls and were in high demand at last years sale. 15E will calve easy and has a fantastic milk EPD.
Homozygous Polled
Can be used in the heifer pen.



Integrity • Commitment • Quality

Erixon Simmentals Bull & Female Sale :: Wednesday, February 28, 2018 :: at the Farm - Clavet, SK



Homo Polled
Purebred Male

ERIXON
Sad 18E

CA-PG1198923
BOBE 18E
Jan 7, 2017

This is our second set of Investors bulls to sell. There is no lack of thick dense hair covering the hide of this sire group. 18E has a nice rounded muscle pattern and out of a very maternal cow with a great udder. A daughter of 68U was our high seller in the 2011 edition of Simmsational going to W2 Livestock. Homozygous Polled

Sire

Act. BW	Adj. 205 wt	Adj. 365 wt	CE	Canadian Simmental Association EPD's	Milk
BW	205 wt	365 wt	CE	BW WW YW MCE MWW	Milk
102	756	1351	2.4	5.1 59 82.2 9 55	25.5

MRC INVESTOR 60B
ERIXON LADY 68U

MR HOC BROKER
TWIN-CHIEF TAHITI 60T
TNT GUNNER N208
ERIXON MISS BUILDER 22P



Homo Polled Purebred Male

ERIXON
Sad 25E

CA-BPG1198865 BOBE 25E Jan 9, 2017

MRL PRETTY RECKLESS 68B
ERIXON LADY 35B

MRL EL TIGRE 52Z
MRL MISS 310X
ERIXON DEALER 63Z
ERIXON LADY 16T

Act. BW	Adj. 205 wt	Adj. 365 wt	CE	Canadian Simmental Association EPD's	Milk
BW	205 wt	365 wt	CE	BW WW YW MCE MWW	Milk
98	797	1403	-0.1	7.3 79.1 119.2 6.9 57.7	18.1

His sire, Reckless walks our pastures and has been used heavily in our program. We are calving our first set of daughters this year. 25E himself will work on a wide variety of cows. Homozygous Polled



Homo Polled Homo Black Purebred Male

ERIXON
Sad 29E

CA-BPG1198712 BOBE 29E Jan 9, 2017

TNGL GRAND FORTUNE Z467
ERIXON LADY 21U

SS EBONYS GRANDMASTER
AJE/HS/MBCC HOPE FLOATS
COTT-GFI FULLBACK 0038N
ERIXON LADY 50N

Act. BW	Adj. 205 wt	Adj. 365 wt	CE	Canadian Simmental Association EPD's	Milk
BW	205 wt	365 wt	CE	BW WW YW MCE MWW	Milk
103	831	1349	4	5.4 72.9 99.9 5.2 64.4	27.9

29E is a great herd sire prospect that has extra size, length and pounds. He will sire feeder cattle that will grow, gain and weigh heavy. The Grand Fortune semen has been in high demand in Canada. We did sell two Grand Fortune bred heifers in the 40th Anniversary edition of Simmsational to Red Willow and Packett Brothers. Homozygous Polled, Homozygous Black

17D - paternal sister



Homo Polled
Purebred Male

ERIXON *Lad* 22E

CA-BPTG1199063
BOBE 22E
Jan 8, 2017

Two soggy made ET flushmates out of Reckless and the great Erixon Lady 133U cow. Their grandmother has put bulls into several breeder programs and his dam has produced Erixon Sniper 68Y who was purchased by Janzen Ranches, Erixon High Roller 143B who is owned by Hannah Simmentals and Canadian Sires, and many other top end bulls. A daughter by 133U and Capone just calved and does she ever look good! 22E - Homozygous Polled 105E - Homozygous Polled



MRL PRETTY RECKLESS 68B
ERIXON LADY 133U

MRL EL TIGRE 52Z
MRL MISS 310X
LBR CROCKET R81
ERIXON MISS JAL 44P

Act. BW	Adj. 205 wt	Adj. 365 wt	CE	Canadian Simmental Association EPD's					
				BW	WW	YW	MCE	MWW	Milk
97	882	1410	-0.2	6.2	75.6	105.6	1.4	58.1	20.3



Homo Polled
Purebred Male

ERIXON *Lad* 105E

CA-PTG1199050
BOBE 105E
Jan 22, 2017



BOBE 45C - Maternal brother



BOBE 91D - Maternal brother



Erixon High Roller - Maternal brother



Act. BW	Adj. 205 wt	Adj. 365 wt	CE	Canadian Simmental Association EPD's					
				BW	WW	YW	MCE	MWW	Milk
101	755	1345	-0.2	6.2	75.6	105.6	1.4	58.1	20.3

MRL PRETTY RECKLESS 68B
ERIXON LADY 133U

MRL EL TIGRE 52Z
MRL MISS 310X
LBR CROCKET R81
ERIXON MISS JAL 44P

Integrity • Commitment • Quality

Erixon Simmentals Bull & Female Sale :: Wednesday, February 28, 2018 :: at the Farm - Clavet, SK

We can't say enough good things about 717Y. She is a beauty to look at, has stellar EPD's and most importantly she can raise the good ones! She raised a \$34,000 heifer calf that sold at Friday Night Lights and we are currently flushing a daughter of 717Y.



Homo Polled
Purebred Male

ERIXON
Sad 23E

CA-BPTG1199096
BOBE 23E
Jan 8, 2017

23E has extra style and maternal power. There is tons of structural correctness and quality in this guy. The profile on him is very high end, the way he flows from his shoulder into his elongated neck is a characteristic that is hard not to focus on. He is a sound made individual with large hoof structure, and is fluent in his movement. He has a huge adjusted yearling weight of 1564lbs and will weigh the scale down on sale day. He stood second in a strong class at Agribition. Homozygous Polled



87C - maternal sister

Act. BW	Adj. 205 wt	Adj. 365 wt	CE	Canadian Simmental Association				EPD's		Milk
98	895	1564	8.6	BW	WW	YW	MCE	MWW	18.5	
				3.7	79.9	117	9.6	58.5		

MRL PRETTY RECKLESS 68B
REMINGTON RINA 717Y

MRL EL TIGRE 52Z
MRL MISS 310X
OLF ODIN U5
REMINGTON DUKE 113W



Homo Polled
Purebred Male

ERIXON
Sad 185D

CA-BPG1189936
BOBE 185D
Oct 20, 2016

This is our one and only extra age bull to sell in 2018 and he is a good one! 185D is a prime example of built in calving ease combined with huge performance numbers. His full ET brother is 23E. Homozygous Polled



717Y - Dam of Lots 11 & 12



BOBE 10B - Maternal Sister

Act. BW	Adj. 205 wt	Adj. 365 wt	CE	Canadian Simmental Association				EPD's		Milk
88	895	1564	8.6	BW	WW	YW	MCE	MWW	18.5	
				3.7	79.9	117	9.6	58.4		

MRL PRETTY RECKLESS 68B
REMINGTON RINA 717Y

MRL EL TIGRE 52Z
MRL MISS 310X
OLF ODIN U5
REMINGTON DUKE 113W



Homo Polled Purebred Male
ERIXON *Lad* 37E

CA-PG1198933 BOBE 37E Jan 10, 2017

WFL WESTCOTT 24C

TNT 90 PROOF Z401
 WFL SWEET LICIOUS 1044X
 WFL IDENTITY 23X
 ERIXON LADY 78Y

ERIXON LADY 76B

Act. BW	Adj. 205 wt	Adj. 365 wt	CE	Canadian Simmental Association EPD's	BW	WW	YW	MCE	MWW	Milk
101	790	1376	3.5	5.3	68.2	93.8	11.1	56.6	22.5	

It is real tempting to group the bulls in this catalogue by cow families. If your looking to run a few bulls out of the same cow family, just give us a call and we can go through the catalogue in more detail. 76B is absolutely gorgeous! Real clean fronted, big middled, nice uddered, and to top it all off out of a very maternal cow family.
 Homozygous Polled



Homo Polled Homo Black Purebred Male

ERIXON *Lad* 38E

CA-BPG1198746 BOBE 38E Jan 10, 2017

MR CCFVISION

MR NLC UPGRADE U8676
 GCF MISS ELSA
 ERIXON DEALER 63Z
 REMINGTON DUKE 113W

ERIXON LADY 29B

Act. BW	Adj. 205 wt	Adj. 365 wt	CE	Canadian Simmental Association EPD's	BW	WW	YW	MCE	MWW	Milk
84	783	1242	12.3	1.9	79.4	126.3	8.7	59.8	20.1	

Here is a different twist on a pedigree for anyone looking for a black bull. Vision is a black white faced bull that has style and calving ease built in. 38E is really heavily muscled throughout the rear quarter, but has a clean cut front end. He is a curve bender of a bull with a CE of 12.3 and a WWT 79.4 , YWT 126.3. He'll calve with ease, but put some muscle shape and pay weight back in his calf crop.
 Homozygous Polled, Homozygous Black. Can be used in the heifer pen.



Homo Polled
 75% Male

ERIXON *Lad* 40E

CA-BPRS1199053
 BOBE 40E
 Jan 11, 2017

He is a 3/4 blood that comes out of a gorgeous uddered On Target half blood cow. This is an all around solid, really functional bull out of a great cow! We think his picture speaks for itself.
 Homozygous Polled



328W - Dam

MRL PRETTY RECKLESS 68B

MRL EL TIGRE 52Z
 MRL MISS 310X
 REMINGTON ON TARGET 2S
 ALCHEMY BLUEBLOOD 21M

REMINGTON F1 BLUEBLOOD 328

Act. BW	Adj. 205 wt	Adj. 365 wt	CE	Canadian Simmental Association EPD's	BW	WW	YW	MCE	MWW	Milk
100	783	1401	4.1	4.2	66.7	99	5.5	49.9	16.5	

Integrity • Commitment • Quality

Erixon Simmentals Bull & Female Sale :: Wednesday, February 28, 2018 :: at the Farm - Clavet, SK



16

Homo Polled Purebred Male
ERIXON *Sad* 41E

CA-BPG1198942 BOBE 41E Jan 11, 2017

MRL PRETTY RECKLESS 68B

MRL EL TIGRE 52Z
MRL MISS 310X
ANKONIAN RED CAESAR
4E RED HOT

ERIXON LADY 83U

Act. BW	Adj. 205 wt	Adj. 365 wt	CE	Canadian BW	Simmental WW	Association YW	EPD's MCE	MWW	Milk
104	850	1629	0.7	6.9	84.7	122	9	61.3	18.9

41E is the type that will add performance and substance to your calf crop. Trust us when we say he will add performance, he has an adjusted yearling weight of 1629lbs. This cow family goes back to a Big Country cow that we had great success flushing years back.
Homozygous Polled



17

Homo Polled Homo Black Purebred Male

ERIXON *Sad* 44E

CA-BPG1198969 BOBE 44E Jan 11, 2017

MR CCFVISION

MR NLC UPGRADE U8676
GCF MISS ELSA
FBF1 COMBUSTIBLE
REMINGTON DUKE 113W

ERIXON LADY 106C

Act. BW	Adj. 205 wt	Adj. 365 wt	CE	Canadian BW	Simmental WW	Association YW	EPD's MCE	MWW	Milk
89	792	1499	13	2.2	73.5	115.5	9.6	55.7	18.9

44E started off at a modest 89lbs and has grown into a stout made herd sire prospect. He is sired by the black white faced Vision bull that has calving ease and style built in. 44E has a stellar calving ease number at 13 and ranks in the top 5% of the breed. We feel that he would be a good addition to someones heifer pen.
Homozygous Polled, Homozygous Black. Can be used in the heifer pen



18

Homo Polled Purebred Male

ERIXON *Sad* 56E

CA-BPG1199051 BOBE 56E Jan 14, 2017

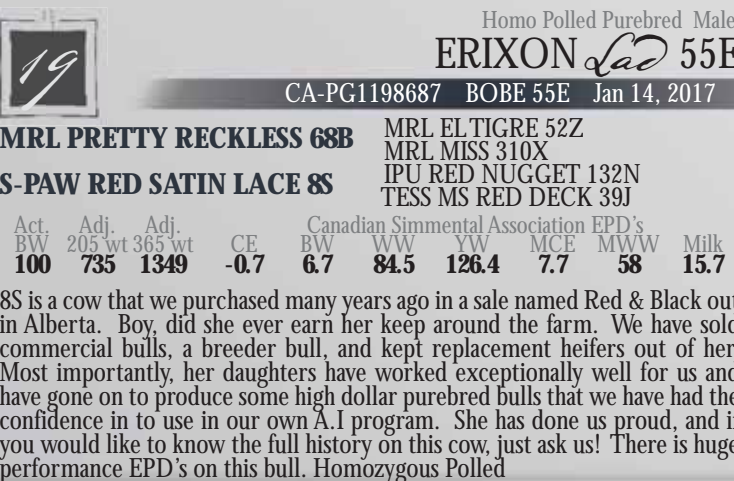
MRL PRETTY RECKLESS 68B

MRL EL TIGRE 52Z
MRL MISS 310X
SKORS BLACK ENTICER 4W
SKORS MS RENOWNED 246U

SKORS BLACK RENOWNED 304Y

Act. BW	Adj. 205 wt	Adj. 365 wt	CE	Canadian BW	Simmental WW	Association YW	EPD's MCE	MWW	Milk
102	809	1412	4.2	5.4	81.2	119.8	6.4	56.1	15.5

56E is the full brother to our high selling black bull in 2017, Erixon Relentless. We used Relentless extensively in our A.I program and his calves are hitting the ground now. Performance, predictability and consistency are locked in on this bull. Homozygous Polled



19

Homo Polled Purebred Male

ERIXON *Sad* 55E

CA-PG1198687 BOBE 55E Jan 14, 2017

MRL PRETTY RECKLESS 68B

MRL EL TIGRE 52Z
MRL MISS 310X
IPU RED NUGGET 132N
TESS MS RED DECK 39J

S-PAW RED SATIN LACE 8S

Act. BW	Adj. 205 wt	Adj. 365 wt	CE	Canadian BW	Simmental WW	Association YW	EPD's MCE	MWW	Milk
100	735	1349	-0.7	6.7	84.5	126.4	7.7	58	15.7

8S is a cow that we purchased many years ago in a sale named Red & Black out in Alberta. Boy, did she ever earn her keep around the farm. We have sold commercial bulls, a breeder bull, and kept replacement heifers out of her. Most importantly, her daughters have worked exceptionally well for us and have gone on to produce some high dollar purebred bulls that we have had the confidence in to use in our own A.I program. She has done us proud, and if you would like to know the full history on this cow, just ask us! There is huge performance EPD's on this bull. Homozygous Polled

Polled Purebred Male
ERIXON *Sad* 64E

CA-PG1198727 BOBE 64E Jan 15, 2017

MRL CAPONE 130B

TNT BOOTLEGGERS Z268
MRL MISS 836W
ANKONIAN RED CAESAR
ERIXON LADY 3J

ERIXON LADY 24U

Act. BW	Adj. 205 wt	Adj. 365 wt	CE	Canadian BW	Simmental WW	Association YW	EPD's MCE	MWW	Milk
95	753	1355	7.8	3.9	67.4	95.7	10.9	58.3	24.6

These Capone bulls were in high demand at last year's sale. We really appreciate what 64E has to offer the industry. He is square hipped, displays a natural rib shape and is just easy to look at.

21

Homo Polled 75% Male
ERIXON *Sad* 69E

CA-PRS1199032 BOBE 69E Jan 15, 2017

MRL CAPONE 130B

TNT BOOTLEGGER Z268
 MRL MISS 836W
 ERIXON DEALER 63Z
 RED ANGUS/RED ANGUS

ERIXON LADY 156C

Act. BW	Adj. 205 wt	Adj. 365 wt	CE	Canadian Simmental Association EPD's	EPD's	Milk			
BW	WW	YW	MCE	MWW					
100	791	1505	6.3	4.6	71.9	111.2	2.6	52.9	16.9

This 3/4 blood bull sure has an impressive hair coat, dark red, dense and fuzzy. His dam has done an excellent job with raising her first calf. We sold a paternal sister to 69E at the 2017 edition of Friday Night Lights to good folks of Hogel Livestock and Richards Cattle. Homozygous Polled



56D - paternal sister

22

Polled Purebred Male
ERIXON *Sad* 71E

CA-PG1198894 BOBE 71E Jan 16, 2017

ERIXON DEALER 63Z

HARVIE JDF WALLBANGER 111X
 ERIXON LADY 35T
 MR ISHEE RED 600UNIQUE
 ERIXON RED LADY 47R

ERIXON LADY 57U

Act. BW	Adj. 205 wt	Adj. 365 wt	CE	Canadian Simmental Association EPD's	EPD's	Milk			
BW	WW	YW	MCE	MWW					
104	766	1432	3.9	6.6	80.4	119.4	3.6	54.5	14.3

If you're looking to add some extra growth and length of spine to a calf crop mark 71E down in the catalogue. He sits in the top 4% for both YWT and WWT. The Erixon Dealer 63Z sire group was one of the most consistent, and deep bodied sire groups that we have had the privilege of selling.



Sire

23

Homo Polled
 Purebred Male

ERIXON *Sad* 74E

CA-PG1198932
 BOBE 74E
 Jan 16, 2017

Stout, stout, stout! 74E is a very impressive one that is packed full of meat and muscle. The Westcott sire group is going to be in high demand at sale season. We can't say enough good about the group of Westcott calves. Their hairy, big middled, stout and very docile cattle. Exactly the type that we are trying to raise! Homozygous Polled



WFL WESTCOTT 24C

TNT 90 PROOF Z401
 WFL SWEET LICIOUS 1044X
 LFE RED NORTHERN 376T
 SU PATRICIA 440P

ERIXON LADY 75X

Act. BW	Adj. 205 wt	Adj. 365 wt	CE	Canadian Simmental Association EPD's	EPD's	Milk			
BW	WW	YW	MCE	MWW					
102	758	1360	2.7	5.3	67.8	104	8.2	57	23.1

Integrity • Commitment • Quality

Erixon Simmentals Bull & Female Sale :: Wednesday, February 28, 2018 :: at the Farm - Clavet, SK

Homo Polled
Purebred Male

24

ERIXON
Sad 77E

CA-BPG1199052
BOBE 77E
Jan 17, 2017



Soggy, big middled, easy doing cattle are the type that we are striving to raise. The softness, hair coat, weight, and presence that 77E displays is very hard to come by. We absolutely love this bull! It's not the first time that his dam has cranked out a good one. 77E is a true sale feature and we think his picture speaks loud and clear as to just how good this bull is! Homozygous Polled

Act. BW	Adj. 205 wt	Adj. 365 wt	CE	Canadian Simmental Association EPD's				Milk
				BW	WW	YW	MCE	MWW
106	893	1488	3.4	5.8	75.5	106.6	5.8	56.5

MRL PRETTY RECKLESS 68B
REMINGTON REFLECTIONS310W

MRL EL TIGRE 52Z
MRL MISS 310X
STF DOMINIQUE R170
HS REFLECTIONS J34



25

Homo Polled Purebred Male
ERIXON *Sad* 80E

CA-PG1198935 BOBE 80E Jan 19, 2017

WFLWESTCOTT 24C
ERIXON LADY 78Y

TNT 90 PROOF Z401
WFL SWEET LICIOUS 1044X
KOP CROSBY 137W
ERIXON LADY 90U

Act. BW	Adj. 205 wt	Adj. 365 wt	CE	Canadian Simmental Association EPD's				Milk
				BW	WW	YW	MCE	MWW
95	731	1438	3.7	4.3	65.6	97.6	8.5	60.4

Lots of the guess work is done here, the maternal and paternal sides of the pedigree are very strong. 78Y might just be our favorite cow on the farm to look at. She carries an udder of perfection, thick dense hair, and is really sharp fronted. If you're looking to keep some replacement females we highly recommend 80E, he also has a fantastic milk EPD of 27. Homozygous Polled



26

Polled Purebred Male
ERIXON *Sad* 84E

CA-PG1198967 BOBE 84E Jan 19, 2017

WFLWESTCOTT 24C
ERIXON LADY 103X

TNT 90 PROOF Z401
WFL SWEET LICIOUS 1044X
WHEATLAND RED ACE 747T
MISS ARNOLD L2465

Act. BW	Adj. 205 wt	Adj. 365 wt	CE	Canadian Simmental Association EPD's				Milk
				BW	WW	YW	MCE	MWW
97	894	1481	7.4	3.6	79.3	116.4	11.5	63.7

Gosh, we sure do love this bull and his dam. You will have to look hard to find a cow with as much volume and rib shape as 103X. She is a beautifully balanced cow with an exceptional udder that we are proud to have carry our tattoo. Actually, we can not say enough good things about her, she is the type of cow that makes a person look twice at. We sold a daughter off her in the prestigious Friday Night Lights to the Maxwell's at Viking, Ab.



Homo Polled
Purebred Male

ERIXON *Sad* 88E

CA-PG1198963
BOBE 88E
Jan 19, 2017

88E is one of the feature Westcott bulls to sell. He's a good one! 100A is a daughter of one of our favorite cows on the farm, 31P. 31P is getting up there in age, but has blessed us with another calf. We are sure that 100A will follow in her dams footsteps and be a foundation cow in our herd for many years to come.
Homozygous Polled



WFL WESTCOTT 24C
ERIXON LADY 100A

TNT 90 PROOF Z401
WFL SWEET LICIOUS 1044X
IPU DIABLO 41Y
ERIXON LADY 31P

Act. BW	Adj. 205 wt	Adj. 365 wt	CE	Canadian Simmental Association EPD's					
				BW	WW	YW	MCE	MWW	Milk
98	843	1517	3.9	5.5	80.6	123.5	11	65	24.7



Homo Polled Purebred Male

ERIXON *Sad* 89E

CA-PG1199012 BOBE 89E Jan 20, 2017

MRL PRETTY RECKLESS 68B
ERIXON LADY 117W

MRL EL TIGRE 52Z
MRL MISS 310X
MCINTOSH EDGE 15T
SU PATRICIA 440P

Act. BW	Adj. 205 wt	Adj. 365 wt	CE	Canadian Simmental Association EPD's					
				BW	WW	YW	MCE	MWW	Milk
103	870	1385	1.5	5.1	76	111.4	4.3	56.5	18.5

There is some extra frame and body extension built into 89E. Sired by Reckless and out of a productive Edge cow will help add some pay weight into his calf crop.
Homozygous Polled



Polled Purebred Male

ERIXON *Sad* 91E

CA-BPG1198675 BOBE 91E Jan 20, 2017

MRL PRETTY RECKLESS 68B
ERIXON LADY 4T

MRL EL TIGRE 52Z
MRL MISS 310X
RED BARON HR P101
ERIXON LADY 47N

Act. BW	Adj. 205 wt	Adj. 365 wt	CE	Canadian Simmental Association EPD's					
				BW	WW	YW	MCE	MWW	Milk
94	746	1279	5.6	4	67.9	99.2	9.6	55.8	21.8

91E is a solid bull, that will work on all types and kinds of cows. His sire Pretty Reckless has done us proud with his second calf crop. He has the ability to calve with ease, but yet add great growth and performance into both his bulls and females. We are very excited to see where the future calf crops off of Pretty Reckless and his sons take us.



Integrity • Commitment • Quality

Erixon Simmentals Bull & Female Sale :: Wednesday, February 28, 2018 :: at the Farm - Clavet, SK



30

Homo Polled Purebred Male
ERIXON *Lad* 92E

CA-PG1198709 BOBE 92E Jan 20, 2017

WFL WESTCOTT 24C

ERIXON LADY 18Y

TNT 90 PROOF Z401
WFL SWEET LICIOUS 1044X
WHEATLAND RED ACE 747T
ERIXON LADY 10U

Act. BW	Adj. 205 wt	Adj. 365 wt	CE	Canadian Simmental Association	EPD's	Milk			
BW	WW	YW	MCE	MWW					
103	866	1378	3.6	5.4	82	120.4	11.6	62.8	21.8

Here is a real honest bull that will work on a variety of cows. He is a well balanced, well rounded and will leave you both heavy weight steers and tremendous replacement females. Homozygous Polled

Erixon Orbit - Maternal brother



31

Homo Polled Purebred Male
ERIXON *Lad* 94E

CA-PG1198750 BOBE 94E Jan 20, 2017

WFL WESTCOTT 24C

ERIXON LADY 31P

TNT 90 PROOF Z401
WFL SWEET LICIOUS 1044X
HOOK'S RED QUORUM 55H
ERIXON LADY 22M

Act. BW	Adj. 205 wt	Adj. 365 wt	CE	Canadian Simmental Association	EPD's	Milk			
BW	WW	YW	MCE	MWW					
87	863	1487	3.6	5.5	76.4	120.2	11.4	66.7	28.5

31P has been one of our favorites since day one. She is very docile, elongated through the neck, very broody, but most importantly she can produce the good ones. 94E himself has been a pleasure to watch mature since the beginning. He has a top notch disposition, and is very easy on the eyes to analyze. We highly recommend this bull if you want to raise some replacement heifers. 94E also has a great milk EPD of 28.5, ranking in the top 30% of the breed. Homozygous Polled

32

Homo Polled Purebred Male
ERIXON *Lad* 93E

CA-PG1198673 BOBE 93E Jan 20, 2017

MRC INVESTOR 60B

SUNNYSIDE MS HALEY 3X

MR HOC BROKER
TWIN-CHIEF TAHITI 60T
ERIXON RED RIOT 27U
LAZY BAR-B HALEY 3N

Act. BW	Adj. 205 wt	Adj. 365 wt	CE	Canadian Simmental Association	EPD's	Milk			
BW	WW	YW	MCE	MWW					
102	758	1260	-0.8	4.5	55.2	80.7	9	50.3	22.7

3X is a real capacious, big middled cow that puts that substance back into her calves. 93E is a very functional bull that has a great cow backing him. Homozygous Polled

33

Homo Polled Purebred Male
ERIXON *Lad* 106E

CA-PG1199038 BOBE 106E Jan 22, 2017

MRL CAPONE 130B

ERIXON LADY 204S

TNT BOOTLEGGER Z268
MRL MISS 836W
RED BARON HR P101
ERIXON LADY 11R

Act. BW	Adj. 205 wt	Adj. 365 wt	CE	Canadian Simmental Association	EPD's	Milk			
BW	WW	YW	MCE	MWW					
98	713	1308	7	4.4	67.7	95.9	10.1	53.7	19.8

Several maternal brothers to 106E have sold in the past with the highlight being Erixon Devils Cut in 2014 selling for \$20,000 to XRC Simmentals. Being out of this highly productive Red Baron cow and the great Capone will prove to be an interesting purchase. The Capone calves were extremely vigorous at birth and have grown into a very sought after sire group. Homozygous Polled



New Sale Location

From Saskatoon: 8 miles south on Hwy 11; turn at Coop Cardlock (Tamke Road); 7 miles east

From the south on Hwy 11: 11 miles north of Dundurn on Hwy 11, turn at Coop Cardlock (Tamke Road); 7 miles east

From Hwy 16: Take the Clavet west access road, go 1 mile south to the "T" intersection, turn east, go 1/4 mile, then follow the speed curve south for 2 miles



Homo Polled
Purebred Male

ERIXON *Lad* 107E

CA-PG1198684
BOBE 107E
Jan 22, 2017

Not only is he a testament to how good his Power Play dam is, but also the job that Orbit has done in producing high growth offspring. Orbit is a bull that carries our tattoo and we were fortunate enough to have a great run on the show road with him as a calf. 107E pushes down the scale big time and has huge performance numbers at WWT 89.2 and YWT 128.9.
Homozygous Polled



ERIXON ORBIT 20C
ERIXON LADY 5A

COME AS U R RED ROCKET
ERIXON LADY 18Y
ERIXON POWER PLAY 102Y
ERIXON LADY 60X

Act. BW	Adj. 205 wt	Adj. 365 wt	CE	Canadian Simmental Association			EPD's		Milk
				BW	WW	YW	MCE	MWW	
102	860	1511	1.4	6.4	89.2	128.9	8.7	64.2	19.6



Homo Polled
Purebred Male

ERIXON *Lad* 112E

CA-BPG1198706
BOBE 112E
Jan 24, 2017

18Z is a back baldie that is a 7/8 sister to Erixon Why Not 111B that we showed and sold to Stevertson Land & Cattle and Sunberry Ranch, and a 7/8 sister to Erixon Lad 21C that walks at Sunnyside Simmentals. 18Z was among the first set of Wallbanger females to ever calve, they have not disappointed! They are proving to be clean necked, soft sided individuals that are highly productive. 112E will be one of the heavy weights on sale day as he has an adjusted yearling weight of 1576 lbs.
Homozygous Polled



MRL PRETTY RECKLESS 68B
ERIXON LADY - 18Z

MRL EL TIGRE 52Z
MRL MISS 310X
HARVIE JDFWALLBANGER111X
PORTERS 234T

Act. BW	Adj. 205 wt	Adj. 365 wt	CE	Canadian Simmental Association			EPD's		Milk
				BW	WW	YW	MCE	MWW	
103	866	1576	4.2	5.1	82.6	125.3	4.6	56.8	15.5



Homo Polled
Purebred Male

ERIXON
Lad 127E

CA-PG1198689
BOBE 127E
Jan 26, 2017

A maternal sister sold in December in Simmsational to Mader Ranches. She is a true tank of a female! Here is a young cow that has proven herself to be able to produce the good ones and is just starting to write her own story. We think the picture of this bull speaks for itself. He's a top end bull that we are proud to say carries the 'BOBE' tattoo!
Homozygous Polled

Maternal Sister



WFL WESTCOTT 24C
ERIXDON LADY 8A

TNT 90 PROOF Z401
WFL SWEET LICIOUS 1044X
LFE BS LEWIS 322U
ERIXON LADY 83U

Act. BW	Adj. 205 wt	Adj. 365 wt	CE	Canadian Simmental Association	EPD's	Milk			
				BW	WW	YW	MCE	MWW	
97	781	1419	4.6	6	77.1	114.7	10.3	60.8	22.2



Homo Polled
Purebred Male

ERIXON
Lad 137E

CA-PG1198960
BOBE 137E
Jan 28, 2017

98X is a real strong uddered cow. She has a tight attachment and perfectly placed little teats. A real nice bred heifer sold to Mud Butte Simmentals in Simmsational a couple years ago. 137E will be a front runner and one of our picks on sale day.
Homozygous Polled



BOBE 112C - Maternal Sister



Sire

Act. BW	Adj. 205 wt	Adj. 365 wt	CE	Canadian Simmental Association	EPD's	Milk			
				BW	WW	YW	MCE	MWW	
98	842	1434	2.3	5.7	77.7	111.4	4.7	61.3	22.4

MRL PRETTY RECKLESS 68B
ERIXON LADY 98X

MRL EL TIGRE 52Z
MRL MISS 310X
LBR CROCKET R81
ERIXON LADY 21M



Homo Polled Purebred Male

ERIXON *Sad* 114E

CA-PG1199055 BOBE 114E Jan 24, 2017

WFLWESTCOTT 24C

TNT 90 PROOF Z401
WFL SWEET LICIOUS 1044X
MUIRHEADS RED HEAT 33S
CROSSROAD TIFFANY 179T

CROSSROAD WINNIE 365W

Act. BW	Adj. 205 wt	Adj. 365 wt	CE	Canadian Simmental Association EPD's	Milk
BW	WW	YW	MCE	MWW	
98	805	1429	6.3	5.6 75.8 116.7 10	61.4 23.5

If we could describe 365W in one word, it would be; consistent. She has produced good solid functioning calves year after year. We truly can not express how pleased we are with the Westcott calves. They are square made, round muscled, and have wicked hair.

Homozygous Polled



Homo Polled Purebred Male

ERIXON *Sad* 133E

CA-PG1198977 BOBE 133E Jan 27, 2017

WFLWESTCOTT 24C

TNT 90 PROOF Z401
WFL SWEET LICIOUS 1044X
KOP CROSBY 137W
ERIXON LADY - 8W

ERIXON LADY 111Z

Act. BW	Adj. 205 wt	Adj. 365 wt	CE	Canadian Simmental Association EPD's	Milk
BW	WW	YW	MCE	MWW	
105	802	1279	2.9	6 74.5 104.2 11.6	61.5 24.2

We promise you that this bull will be a front runner on sale day. He has been a favorite here, especially since he is a red baldy. His dam has been a top end producer, with her most recent accomplishment being the \$18,000 Royal Red daughter that sold at Friday Night Lights in 2015.

Homozygous Polled



Homo Polled Purebred Male

ERIXON *Sad* 143E

CA-PG1199011 BOBE 143E Jan 30, 2017

MRL PRETTY RECKLESS 68B

MRL EL TIGRE 52Z
MRL MISS 310X
KOP CROSBY 137W
4E RED HOT

ERIXON LADY 116Z

Act. BW	Adj. 205 wt	Adj. 365 wt	CE	Canadian Simmental Association EPD's	Milk
BW	WW	YW	MCE	MWW	
101	806	1409	0.9	6.5 79 107.3 7	56.6 17.1

116Z is off one of the first cows that was ever flushed on the farm. She is dark cherry red, has a tremendous hair coat and to top it all off carries an ideal udder. 143E himself has the ability to fit into any program.

Homozygous Polled



Homo Polled Purebred Male

ERIXON *Sad* 124E

CA-PG1199016 BOBE 124E Jan 25, 2017

WFLWESTCOTT 24C

TNT 90 PROOF Z401
WFL SWEET LICIOUS 1044X
KOP CROSBY 137W
ERIXON LADY 2P

ERIXON LADY 118Z

Act. BW	Adj. 205 wt	Adj. 365 wt	CE	Canadian Simmental Association EPD's	Milk
BW	WW	YW	MCE	MWW	
95	796	1345	3	4.8 72.7 106.9 12.7	62.6 26.2

118Z is out of our foundation donor cow 2P. Her udder is perfectly structured with a tight attachment. I do not think that we could write a better pedigree on this bull. This is the type of bull that we strive to raise, solid made with lots of natural fleshing ability and hair.

Homozygous Polled



Integrity • Commitment • Quality

Erixon Simmentals Bull & Female Sale :: Wednesday, February 28, 2018 :: at the Farm - Clavet, SK



42

Homo Polled
Purebred Male

ERIXON
Lad 144E

CA-PG1198674
BOBE 144E
Jan 30, 2017

Stout, stout, stout is how we would describe this young herd bull. His dam 3X is a direct daughter of our flush cow, 133U. Her udder is exceptional! There is lots of maternal qualities built into both the top side and bottom side of this pedigree.
Homozygous Polled

Act. BW	Adj. 205 wt	Adj. 365 wt	CE	Canadian Simmental Association				EPD's	Milk
				BW	WW	YW	MCE	MWW	
103	821	1427	3.4	5.6	78.6	112.7	5.7	60.7	21.4

WFL WESTCOTT 24C
ERIXON LADY 3X

TNT 90 PROOF Z401
WFL SWEET LICIOUS 1044X
WHEATLAND RED ACE 747T
ERIXON LADY 133U



43

Homo Polled Purebred Male

ERIXON
Lad 146E

CA-BPG1198887 BOBE 146E Jan 30, 2017

MRL PRETTY RECKLESS 68B
ERIXON LADY 47B

MRL EL TIGRE 52Z
MRL MISS 310X
HARVIE JDF WALLBANGER111X
EDN NIKA 37N

Act. BW	Adj. 205 wt	Adj. 365 wt	CE	Canadian Simmental Association				EPD's	Milk
				BW	WW	YW	MCE	MWW	
96	828	1385	3.9	4.4	74.8	110.7	6.4	55.2	17.8

47B is a direct daughter off our old Black Joker donor cow. We showed a full sister to 47B in the fall of 2016 as a two year old cow. If you are looking for some real strong maternal strength to add to your cow herd this bull has it built in.
Homozygous Polled

38B - full sister to dam of Lot 42



44

Homo Polled Purebred Male

ERIXON
Lad 148E

CA-BPG1198692 BOBE 148E Feb 1, 2017

MRL PRETTY RECKLESS 68B
ERIXON LADY 11B

MRL EL TIGRE 52Z
MRL MISS 310X
ERIXON GAME ON 42Z
ERIXON LADY 4Z

Act. BW	Adj. 205 wt	Adj. 365 wt	CE	Canadian Simmental Association				EPD's	Milk
				BW	WW	YW	MCE	MWW	
101	886	1382	5.2	4.5	82.2	122.5	8.7	62.7	21.6

A thick made bull that always got a second look in the pasture all summer. He is a true powerhouse! The Erixon Dealer 63Z sire group was one of the most consistent, and deepest bodied sire groups that we have had the privilege of offering to you.
Homozygous Polled

45

Homo Polled
Purebred Male

ERIXON
Lad 157E

CA-PG1198916
BOBE 157E
Feb 3, 2017

157E will be a very useful type of bull that will go out and produce a very solid calf crop. His dam has a strong udder structure, is really hairy, and is as big bodied and easy fleshing as one could possibly imagine.

Homozygous Polled



WFL WESTCOTT 24C
ERIXON LADY 65Y

TNT 90 PROOF Z401
WFL SWEET LICIOUS 1044X
KOP CROSBY 137W
LFE RS DREAMLADY 34T

Act. BW	Adj. 205 wt	Adj. 365 wt	CE	Canadian Simmental Association EPD's					
BW	WW	YW	MCE	MWW	Milk				
100	766	1435	3.7	5.3	69.3	104.4	5.4	60.7	26

46

Homo Polled
Purebred Male

ERIXON
Lad 158E

CA-PG1199036
BOBE 158E
Feb 4, 2017

Last year we sold the first calf crop off of Capone. Boy, did his calves cause some talk and excitement among commercial cattlemen. We have a group to offer you in the 2018 sale and will have more for 2019. The dam of 158E is sired by Diablo who we used successfully in the heifer pen. The pedigree, EPD profile, and most importantly the look will allow this bull to be used in the heifer pen. Oh ya, he also has a great yearling weight.

Homozygous Polled

Can be used in the heifer pen



MRL CAPONE 130B
ERIXON LADY 181C

TNT BOOTLEGGGER Z268
MRL MISS 836W
IPU DIABLO 41Y
ERIXON MISS JAL 44P

Act. BW	Adj. 205 wt	Adj. 365 wt	CE	Canadian Simmental Association EPD's					
BW	WW	YW	MCE	MWW	Milk				
92	795	1440	7.2	4.2	70.4	104.1	8.5	56.1	20.9

Integrity • Commitment • Quality

Erixon Simmentals Bull & Female Sale :: Wednesday, February 28, 2018 :: at the Farm - Clavet, SK



Homo Polled
Purebred Male
ERIXON
Lad 156E

CA-PG1198914
BOBE 156E
Feb 3, 2017

63Y is easy on the eyes, huge ribbed and has a gorgeous udder. Just check out the picture of her out swath grazing.
Homozygous Polled



Dam

Act. BW	Adj. 205 wt	Adj. 365 wt	CE	Canadian Simmental Association	EPD's	Milk			
				BW	WW	YW	MCE	MWW	
101	775	1361	0.8	5	64.1	97.7	8.6	55	22.9

MRC INVESTOR 60B
ERIXON LADY 63Y

MR HOC BROKER
TWIN-CHIEF TAHITI 60T
WHEATLAND RED ACE 747T
ERIXON LADY 214R



Homo Polled Purebred Male
ERIXON *Lad* 169E

CA-PG1198983 BOBE 169E Feb 10, 2017

WFLWESTCOTT 24C
ERIXON LADY 115A

TNT 90 PROOF Z401
WFL SWEET LICIOUS 1044X
KOP CROSBY 137W
ERIXON LADY 30S

Act. BW	Adj. 205 wt	Adj. 365 wt	CE	Canadian Simmental Association	EPD's	Milk			
				BW	WW	YW	MCE	MWW	
109	820	1370	-0.1	8.7	85.6	131	8.6	64.3	21.5

Buying a semen package on Crosby was one of the best decisions that we have ever made. They are stellar females and are easily picked out in the herd. The best thing about them is that they can raise good functional progeny that are sought after by the commercial cattlemen.
Homozygous Polled



Homo Polled Purebred Male
ERIXON *Lad* 170E

CA-BPTG1199060 BOBE 170E Feb 11, 2017

WFLWESTCOTT 24C
ERIXON LADY 126Y

TNT 90 PROOF Z401
WFL SWEET LICIOUS 1044X
WHEATLAND BULL 680S
ERIXON LADY 21U

Act. BW	Adj. 205 wt	Adj. 365 wt	CE	Canadian Simmental Association	EPD's	Milk			
				BW	WW	YW	MCE	MWW	
94	750	1422	3	6.1	74.7	113.7	8.3	65.1	27.7

This is the only black Westcott bull in the sale. Erixon Lady 126Y was the anchor of our 2013 show string. She had many accomplishments throughout the year, with the grandest being named top 10 in the Royal Bank Cup Supreme at Agribition. 126Y is one of the most consistent, highest valued cows on the farm raising some top end progeny.
Homozygous Polled



Dam

50

Polled Purebred Male

ERIXON *Sad* 179E

CA-PG1198919 BOBE 179E Feb 17, 2017

WFLWESTCOTT 24C

TNT 90 PROOF Z401
WFL SWEET LICIOUS 1044X
KOP CROSBY 137W
ERIXON LADY 55R

ERIXON LADY 67Y

Act. BW	Adj. 205 wt	Adj. 365 wt	CE	Canadian Simmental Association EPD's	BW	WW	YW	MCE	MWW	Milk
100	854	1484	1.2	6.7	79.1	111.5	10.2	64.1	24.5	

We really don't think that a person could go wrong with purchasing a Westcott sired calf. They are the type that will fit into any herd and work on a wide variety of momma cows.



51

Polled Purebred Male

ERIXON *Sad* 180E

CA-PG1198881 BOBE 180E Feb 17, 2017

WFLWESTCOTT 24C

TNT 90 PROOF Z401
WFL SWEET LICIOUS 1044X
LFE RED NORTHERN 376T
ERIXONLADY 10R

ERIXON LADY 42X

Act. BW	Adj. 205 wt	Adj. 365 wt	CE	Canadian Simmental Association EPD's	BW	WW	YW	MCE	MWW	Milk
103	915	1494	1.9	6.9	80.6	117.2	8	64	23.7	

We can't believe how docile the Westcott progeny are. They have been a dream to work with! 180E is a typical Westcott, docile, excellent haired, lots of spring of rib, and he is a dark deep red color.



52

Homo Polled Purebred Male

ERIXON *Sad* 185E

CA-PG1198695
BOBE 185E
Feb 21, 2017

We thought very highly of this young Horizon daughter the day we purchased her from Labatte Simmentals. So broody yet so much class and eye appeal would best describe this leading female. She comes out of an outstanding cow family, the Pocahontas 68M family. Boy, she did not disappointed us the first time around raising a \$32,000 high seller. Homozygous Polled



Dam

Maternal Brother

WFLWESTCOTT 24C

TNT 90 PROOF Z401
WFL SWEET LICIOUS 1044X
MAF R HORIZON 7Y
IPU 68M RED ESSENCE 217X

IPU MS. HORIZON 15B

Act. BW	Adj. 205 wt	Adj. 365 wt	CE	Canadian Simmental Association EPD's	BW	WW	YW	MCE	MWW	Milk
99	806	1347	4.5	6.9	83.2	115.3	8.5	60.3	18.7	

Integrity • Commitment • Quality

Erixon Simmentals Bull & Female Sale :: Wednesday, February 28, 2018 :: at the Farm - Clavet, SK



53

Polled
Purebred Male

ERIXON
Lad 186E

CA-PG1198952
BOBE 186E
Feb 25, 2017

Another bull that you don't want to miss on sale day because of his age. As you can see from his picture, he is solid made, hairy and dark red.

Act. BW	Adj. 205 wt	Adj. 365 wt	CE	Canadian Simmental Association	EPD's	Milk
97	830	1441	2.9	BW 5.4 WW 76.4 YW 113.3 MCE 6 MW 57.7	19.5	

MRL PRETTY RECKLESS 68B
ERIXON LADY 85A

MRL EL TIGRE 52Z
MRL MISS 310X
HARVIE JDF WALLBANGER111X
BLCC MISS 139P



54

Homo Polled Purebred Male

ERIXON *Lad* 192E

CA-PG1198934 BOBE 192E Mar 4, 2017

WFL WESTCOTT 24C
ERIXON LADY 77Z

TNT 90 PROOF Z401
WFL SWEET LICIOUS 1044X
KOP CROSBY 137W
IPU MS. RED ESSENCE 216W

Act. BW	Adj. 205 wt	Adj. 365 wt	CE	Canadian Simmental Association	EPD's	Milk
107	870	1497	1.2	BW 7.1 WW 82.2 YW 115.6 MCE 10.3 MW 65.6	24.5	

Don't let these younger bulls slip by on sale day. His mother comes from a strong maternal background that everyone loves to have in the replacement pen. A maternal sister to 192E sold to the good folks of Maxwell Simmentals in Friday Night Lights a few years back for \$30,000.
Homozygous Polled



201A- maternal sister



53

Polled Purebred Heifer

ERIXON *Lady* 5E

CA-PG1198685 BOBE 5E Jan 5, 2017

MRC INVESTOR 60B

MR HOC BROKER
TWIN-CHIEF TAHITI 60T
LFE BS LEWIS 322U
ERIXON LADY 78Y

ERIXON LADY 6A

Act. BW	Adj. 205 wt	Adj. 365 wt	CE	Canadian Simmental Association	EPD's	Milk			
BW	WW	YW	MCE	MWW					
92	603	1012	3	4	56.4	79.8	0.5	48.7	20.5

Here is a heifer that is fluid in her make up and movement and has a pile of hair. She is an elegant fronted female that is laid in flat at the point of her shoulder. Her dam is one of the biggest volume cows on the place.



56

Polled Purebred Heifer

ERIXON *Miss Lady* 34E

CA-BPG1198760 BOBE 34E Jan 10, 2017

ERIXON DEALER 63Z

HARVIE JDF WALLBANGER 111X
ERIXON LADY 35T
REMINGTON RED LABEL HR
ERIXON LADY 3M

ERIXON LADY 32W

Act. BW	Adj. 205 wt	Adj. 365 wt	CE	Canadian Simmental Association	EPD's	Milk			
BW	WW	YW	MCE	MWW					
96	635	1052	3.8	5	70.7	105.1	6.2	59.2	23.8

If you want a good solid heifer that will give you no fuss and raise a calf that will pay the bills, 34E is a safe bet. Dealer daughters have proven themselves and 32W has put some of our favorite commercial cattlemen bulls into the sale.



57

Polled Purebred Heifer

ERIXON *Lady* 54E

CA-PG1199020 BOBE 54E Jan 13, 2017

MRL CAPONE 130B

TNT BOOTLEGGGER Z268
MRL MISS 836W
NUG ROYAL RED 324A
ERIXON LADY 90U

ERIXON LADY 128C

Act. BW	Adj. 205 wt	Adj. 365 wt	CE	Canadian Simmental Association	EPD's	Milk			
BW	WW	YW	MCE	MWW					
87	740	1140	7.2	4.1	71.4	108.4	6.9	56.6	20.9

The Capone bulls were in high demand at last year's sale. There hasn't been a bunch of Capone females to sell yet, so take advantage of the opportunity to purchase one.



58

Polled Purebred Heifer

ERIXON *Lady* 63E

CA-PG1198874 BOBE 63E Jan 15, 2017

MRC INVESTOR 60B

MR HOC BROKER
TWIN-CHIEF TAHITI 60T
TNT GUNNER N208
ERIXON LADY 37T

ERIXON LADY 37Y

Act. BW	Adj. 205 wt	Adj. 365 wt	CE	Canadian Simmental Association	EPD's	Milk			
BW	WW	YW	MCE	MWW					
101	637	982	2.8	4.8	60.7	90.3	8.7	53.3	22.9

We haven't parted with many Investor heifers in the past, but we do have a few in the sale this year. At Simmsational in December we sold one of the feature red heifers for \$20,000 and she was sired by Investor.



Integrity • Commitment • Quality

Erixon Simmentals Bull & Female Sale :: Wednesday, February 28, 2018 :: at the Farm - Clavet, SK



59

Polled
Purebred Heifer

ERIXON
Lady 108E

CA-PG1198683
BOBE 108E
Jan 22, 2017

108E is an Investor daughter that strikes us as having the ability to fit into any program that is looking for a female to produce solid breeding bulls and functional replacement females. Her Identity dam patterns the Identity females very well. They are highly maternal, tight uddered, and good milking. 5B raised one of our feature heifer bulls in the 2017 sale.



Maternal brother

Act. BW	Adj. 205 wt	Adj. 365 wt	CE	Canadian Simmental Association EPD's	Milk
BW	WW	YW	MCE	MWW	
93	637	1011	1.1	4.2 55.5 78.6 9.2 49	21.2

MRC INVESTOR 60B
ERIXON LADY 5B

MR HOC BROKER
TWIN-CHIEF TAHITI 60T
WFL IDENTITY 23X
ERIXON LADY 45Z



60

Polled Purebred Heifer

ERIXON *Lady* 96E

CA-BPG1199014 BOBE 96E Jan 20, 2017

MRL PRETTY RECKLESS 68B
ERIXON LADY 117Z

MRL EL TIGRE 52Z
MRL MISS 310X
HARVIE JDFWALLBANGER111X
SU PATRICIA 440P

Act. BW	Adj. 205 wt	Adj. 365 wt	CE	Canadian Simmental Association EPD's	Milk
BW	WW	YW	MCE	MWW	
102	688	1008	0.9	6.3 74.7 115.1 4.8 54.6	17.2

Pretty Reckless has more than exceeded our expectations. It is hard to part with any of his females as we would like to keep them all right here at home.



61

Polled Purebred Heifer

ERIXON *Lady* 159E

CA-PG1198892 BOBE 159E Feb 5, 2017

MRL PRETTY RECKLESS 68B
ERIXON LADY 54B

MRL EL TIGRE 52Z
MRL MISS 310X
HARVIE JDFWALLBANGER111X
ERIXON LADY 35T

Act. BW	Adj. 205 wt	Adj. 365 wt	CE	Canadian Simmental Association EPD's	Milk
BW	WW	YW	MCE	MWW	
98	683	1049	3.3	6.1 79.4 115.6 7 53.7	14

A great cow family crossed with Reckless has resulted in a real nice functional heifer. 54B is a full sister to the Dealer bull that we talk so highly of.

62

Polled
Purebred Heifer

ERIXON
Lady 115E

CA-PG1198676
BOBE 115E
Jan 24, 2017

We are real happy with the job Orbit has done for us. Orbit himself carried extra muscle definition throughout his rear quarter. 4U is a really sweet red white face cow that has been consistent over the years.



ERIXON ORBIT 20C
ERIXON LADY 4U

COME AS U R RED ROCKET
ERIXON LADY 18Y
THSF FREEDOM 300N
ERIXON LADY 63N

Act. BW	Adj. 205 wt	Adj. 365 wt	CE	Canadian Simmental Association EPD's	Milk
				BW WW YW MCE MWW	
90	672	937	3.6	4.7 80.5 118.8 8.4 59.5	19.2

63

Polled
Purebred Heifer

ERIXON
Lady 116E

CA-BPG1198876
BOBE 116E
Jan 24, 2017

She is a deep ribbed female that comes by it honestly, as her mother is built the same way. We really like the way 116E profiles. A very attractive heifer, that we feel will grow into one elite cow! She is stout, stout, stout!



MRL PRETTY RECKLESS 68B
ERIXON LADY 39B

MRL EL TIGRE 52Z
MRL MISS 310X
3D RED POWER 150Z
ERIXOM LADY 82W

Act. BW	Adj. 205 wt	Adj. 365 wt	CE	Canadian Simmental Association EPD's	Milk
				BW WW YW MCE MWW	
89	666	1012	2.5	5.5 72.8 101 6 56.1	19.7



64

Polled
Purebred Heifer

ERIXON
Lady 118E

CA-BPG1198924
BOBE 118E
Jan 24, 2017

37N is the grandmother of this stylish, easy on the eye Reckless heifer calf. 37N has played a huge part in our flush program, and we have sold countless progeny off of her and her daughters with great success. The ground work has been done right here. 68A raised our feature heifer calf in the 2016 edition of this sale.

Maternal sister



Act. BW	Adj. 205 wt	Adj. 365 wt	CE	Canadian Simmental Association			EPD's		Milk
BW	WW	YW	MCE	MWW					
94	745	1011	3.1	5.2	76.2	113.4	4	54.7	16.6

MRL PRETTY RECKLESS 68B
ERIXON LADY 68A

MRL ELTIGRE 52Z
MRL MISS 310X
3D BLK FULL THROTTLE 483X
EDN NIKA 37N



65

Polled
Purebred Heifer

ERIXON
Lady 129E

CA-PG1198691
BOBE 129E
Jan 26, 2017

If you have the opportunity to purchase a Westcott female, we wouldn't hesitate. We believe these females will go on to be the foundation cows that sire high sellers time and time again in the future. Just take a look at the picture of 129E, it speaks for the quality of this heifer loud and clear.

Act. BW	Adj. 205 wt	Adj. 365 wt	CE	Canadian Simmental Association			EPD's		Milk
BW	WW	YW	MCE	MWW					
103	683	1133	5	6.6	72.1	95.5	10.4	60.6	24.5

WFL WESTCOTT 24C
ERIXON LADY 10Y

TNT 90 PROOF Z401
WFL SWEET LICIOUS 1044X
TNT GUNNER N208
ERIXOM LADY 82W



Polled
Purebred Heifer

ERIXON

Lady 184E

CA-PG1198965

BOBE 184E

Feb 19, 2017



Westcott sure did cross well with our cows. This is our first calf crop to sell off Westcott, and we are really looking forward to calving out the first daughters in 2018. 184E will be just a year old on sale day.

WFL WESTCOTT 24C

ERIXON LADY 102X

TNT 90 PROOF Z401
WFL SWEET LICIOUS 1044X
REMINGTON GENERALLEE 106T
ERIXON LADY 32R

Act. BW	Adj. 205 wt	Adj. 365 wt	CE	Canadian Simmental Association EPD's					
BW	WW	YW	MCE	MWW	Milk				
95	724	1178	3.4	5.9	82	118.5	12.3	63.3	22.3

What do the numbers mean?

CSA 2018 Spring Breed Average EPD's

CE	BW	WW	YW	MCE	MWW	Milk
6.3	3.7	67.5	97.7	7.3	58.1	24.4

Calving Ease - The ease with which a bull's calves are born. EPDs are reported as deviations in the percent unassisted births. When comparing calving ease EPDs of two sires, the larger EPD indicates a higher percent of unassisted births for calves sired by that bull.

Birth Weight - Calf weight at birth adjusted to a mature dam equivalent. Expected progeny difference is reported in pounds. The larger EPD indicates a heavier average birth weight.

Weaning Weight - Calf weight taken between 160 and 250 days of age and adjusted to 205 days of age and a mature dam equivalent. Expected progeny difference is reported in pounds. The larger EPD indicates a heavier average weaning weight for calves sired by that bull.

Yearling Weight - Weight taken between 330 and 440 days of age and adjusted to 365 days of age and a mature dam equivalent. Expected progeny difference is reported in pounds. The larger EPD indicates a heavier average yearling weight for calves sired by that bull.

Maternal Calving Ease - The ease at which a sire's daughter calve as first calf heifers. The larger EPD indicates a higher percentage of unassisted births for calves born to the sire's daughters.

Maternal Weaning Weight - The weaning weight of animal's daughters calves. Expected progeny difference is reported in pounds. The EPD value predicts the difference in average 205 day weight of an animal's daughters calves compared to calves from daughters of all other animals evaluated. The evaluation reflects both the maternal ability of an animals daughters and the growth potential of their calves. The larger EPD indicates heavier weights due to daughters ability to produce heavier calves.

Milk - Expected progeny difference is reported in pounds of calf weaning weight. The milk EPD is a predictor of a sires genetic merit for milk as expressed in his daughters, or in other words the part of weaning weight attributed to milk genes. The larger EPD indicates heavier average weaning weights due to daughters greater maternal ability.

Integrity • Commitment • Quality

Erixon Simmentals Bull & Female Sale :: Wednesday, February 28, 2018 :: at the Farm - Clavet, SK



BOHRSON
MARKETING SERVICES

RR 4 - SITE 7 - BOX 28 :: OLDS, AB :: T4H 1T8



RETURN POSTAGE GUARANTEED
PORT DE RETOUR GARANTI



Integrity • Commitment • Quality