



Monday, March 2, 2020 at 1:00 pm

At the farm - Clavet, SK

ERIXON

BM

SIMMENTALS BULL & FEMALE SALE

**MONDAY
MARCH 2, 2020
1:00 P.M.**

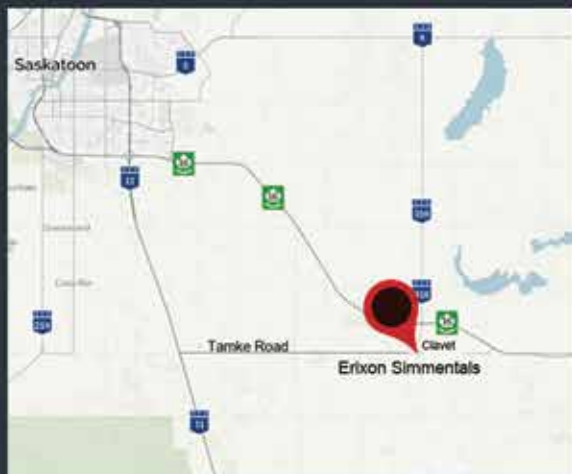
Sale will continue to be held on a Monday in the future.

LOCATION: at the farm Clavet, SK

From Saskatoon: 8 miles south
on Hwy 11; turn at Coop Cardlock
(Tamke Road); 7 miles east

From the south on Hwy 11: 11 miles north of
Dundurn on Hwy 11, turn at Coop Cardlock
(Tamke Road); 7 miles east

From Hwy 16: Take the Clavet west access
road, go 1 mile south to the "T"
intersection, turn east, go 1/4 mile, then
follow the speed curve south for 2 miles



Offering

39 Red Yearling Bulls
10 Black Yearling Bulls
1 Red Extra Age Bull
4 Replacement Heifers

PLEASE JOIN US FOR LUNCH ON SALE DAY

Welcome
On behalf of Dave, myself, Griffin and Holden, I would like to welcome you, our fellow seed stock producers and commercial cattlemen to the 2020 edition of the Erixon Simmentals Bull & Female Sale. 2019 provided us all with some major challenges to overcome, which varied depending on your location. Here we experienced our third year of drought. 2020 brings us new goals, hope and a new perspective on life. One small change for the sale moving forward will be the day of the week on which we hold the sale. It will be held the same week as usual, but on a Monday moving forward instead of a Wednesday.

The herd is built around strong cow families that have been consistent over the years. We believe in the power of the momma cow, and her ability to produce by utilizing forages. Cattle are our sole income and each and every cow on the farm must pull her own weight. Our bulls and heifers come to you out of the industry's leading A.I sires and two of our own walking bulls. We take great pride in striving to find exciting new and upcoming sires. We have invested heavily in semen packages over the years and are very happy with the results. You will hear a lot about our new walking herdbull, Double Bar D Liberator! He is a perfect balance of calving ease and performance. Some of the proven herdsires that are represented again this year are; State of War, Westcott, Orbit, Relentless, Magnum, Bluechip and War Paint. We are very pleased with the job the new kids on the block are doing; Liberator, Rambler, Kill Switch, Alliance, Affiliate and Capacity. We are most proud that some of these sires were born and raised right here! We are excited to get the bulls out and working for our customers. We have something for everyone. Reds, blacks, white faced, heifer bulls, calving easy cow bulls, performance bulls and the list goes on. Please call us and we can discuss the bulls in detail with you. The group of 4 heifers are out of our replacement pen. They are good honest heifers. All the pictures were taken in December/early January. We made sure to get a picture of each and every animal for your appraisal as we do not video the bulls. We are committed to the industry and are always striving to raise the best stock possible.

All the bulls and heifers are on a full herd health program and have been poured with Ivomec. The calves are developed on a high roughage ration that promotes growth and longevity.

If you can't make it to the sale we are more than happy to assist you in your purchase. Feel free to call Dave or I or any of the phone numbers listed for our sales staff. We have the full confidence in our sales staff and this is a free service to you.

We look forward to hosting all our past, present and future customers at our sale facility on the farm. The bulls will continue to sell by live auction and ran through the sale ring for your appraisal. Join us for lunch prior to the sale and after for socializing, refreshments and snacks. If you have any questions feel free to give us a call or stop by the farm.

Cheers folks!
Dave, Krista, Griffin & Holden
Box 156, Clavet, SK S0K 0Y0
Dave's cell: 306 270-2893
Krista's Cell: 306 270-1263
erixonsimmentals@sasktel.net
www.erixonsimmentals.com



Sale Day Information

Sale Day Phones:

Dave Erixon 306.270.2893 Rob Voice 306.270.6082
Krista Erixon 306.270.1263 Martin Bohrsen 306.220.7901
Scott Bohrsen 403.370.3010
Taylor Richards 306.821.4169

Sale Staff

Auctioneer:

Ryan Dorran 403.507.6483

Ringmen:

Rod McLeod 403.540.7986
Taylor Richards 306.821.4169

Delivery Options

Option A: \$50 off per lot if picked up sale day.

Option B: Free on bulls to central points in Saskatchewan, Alberta and Manitoba. In most cases we will deliver the bull to your yard. Trucking will start immediately after the sale at seller's convenience.

Option C: Bulls may be left at the farm free of charge until April 15. A \$3.00/day fee will apply after that and bulls will then need to be picked up or delivery arrangements made with the seller.

We insist all purchases be insured while at Erixon Simmentals. All bulls and females become the risk of the buyer once sold. Erixon Simmentals will provide the utmost care of the animals that return to the farm.

Semen Collection

Erixon Simmentals reserves the right to collect semen on any bull sold through this sale. The semen collection will be at Erixon Simmentals expense and the buyers convenience. Any semen collected will be for Erixon Simmentals in herd use only.

Win a \$2000 Sale Credit

Purchase a bull from any current Saskatchewan member, and when the registration papers are transferred, your name is entered to win a \$2000 sale credit! The draw will be made at the SSA's annual general meeting in July and the lucky winner will have one year to use the credit at any public auction or private sale on bulls or females purchased from any current SSA member.

Guarantee:

All animals will carry the standard breeding guarantee as specified by the Canadian Simmental Association. If a problem occurs with your purchase, please notify us as soon as possible. A bull of equal value and quality will be supplied or a credit given towards the purchase of another Erixon bull.

Sight Unseen Program:

Every year more bulls are purchased sight unseen because of the increasing number of repeat customers and the fact that people are busy. Please call us or our knowledgeable sales staff and we would be happy to discuss the cattle in detail with you.

U.S. Buyers

Erixon Simmentals will do necessary testing at cost for export on bulls and females.

Insurance:

Cassie Dorran, Dorran Marketing Inc. 403-507-5953

Accommodations:

The Bunkhouse - A Prairie Getaway - Contact Britney @ 306-203-2649

A luxury cabin overlooking the prairie landscape.

Spacious 2 bedroom with an additional loft to sleep many.

All amenities provided plus any home made meals required.

A true prairie experience you won't forget.

Located 2 miles south and 3 miles east of the Erixon Simmentals sale location.

No internet bidding:

At this time, in our opinion, there are too many variables out of our control that could cause online bidders to miss the opportunity of owning your chosen animal. Please call one of our sales staff or us in advance and you will be provided you with different options for sale day bidding.

The Erixon family has once again brought an exceptionally deep offering to this year's sale with an outstanding set of bull and select foursome of heifers from the top of their replacement pen. This progressive family sources the very elite genetics in the Simmental business and applies it to enhance their program and in turn, benefit you the loyal customer. The line-up for 2020 has many fresh bloodlines along with tried and proven genetics that will take the guess work out of your next herd bull(s) or replacement heifer purchase.

Dave & Krista annually step up the quality of their sale offering and 2020 is truly the best set of bulls to date. Their attention to detail is to be commended as they're daily putting in the extra effort to enhance their program and make it the very best possible. They have continuously sourced the country for leading sires to use through AI and also added exceptional walking bulls like Liberator to their lineup. This is a program you can invest in with confidence whether you're a fellow breeder looking for a top-end herd sire or a valued commercial cattleman that is looking for quality genetics that will sire top selling calves at the auction mart.

It is an honour to continually work with such a strong program that always puts its customers first and is never tempted to offer a bull that they don't have full confidence in that will be a satisfactory breeder. Last spring, they had a less than ideal semen test which was uncontrollable but they handled it with class and every step forward was to benefit you as they eliminated any problem bulls and didn't roll the dice on them "hoping" they bounce back. They handled it with grace and I commend them for not risking selling a bull that wasn't going to make a full recovery and our respect continued to rise for them as they countlessly put the customer as their #1 priority.

As they put you, the valued customer first, and have an outstanding set of bulls and females on offer, we suggest you join us on sale day at the farm in Clavet. We know that you be impressed with the lineup but if you can't attend, feel free to contact any of the sales staff to represent your needs in a professional and confidential manner. Take note, the sale is moved ahead to Monday and we look forward to visiting with you on sale day!

The Bohrsen Marketing team



Scott Bohrsen
403-370-3010



Taylor Richards
306-821-4169



Darryl Snider
780-385-5561



Geoff Anderson
306-731-7921



Martin Bohrsen
306-220-7901



Rob Voice
306-270-6082



Matt Criddle
306-539-6934



BOHRSON
MARKETING SERVICES

RR 4 - Site 7 - Box 28 - Olds, AB T4H 1T8
bohrsonmarketing@gmail.com / www.bohrson.com



Homo Polled
Purebred Bull

ERIXON
Lad 206F

PTG1241776
BOBE 206F
16 June 2018

206F is an embryo summer born bull that is right for the times. We have thought very highly of this bull from day one. We sold a daughter off 41C in December at the Border City Sale in Lloydminster out to Ontario. She was our lead off bred there and was a beauty to look at. We just calved a full sister, the udder quality in this cow family is extremely strong.



Maternal Sister

SPRINGCREEK BLUE CHIP 9D
ERIXON LADY 41C

SPRINGCREEK LINER 56U
SPRINGCREEK TARA 111R
ERIXON REVELSTOCK 41A
ERIXON LADY 122Z

Act. BW	Adj. 205 wt	Adj. 365 wt	CE	Canadian BW	Simmental WW	Association YW	EPD's MCE	MWW	Milk
97			5.8	4.4	85	131.4	6.4	73.8	31.3



Homo Polled
Hetro Black
Purebred Bull

ERIXON
Lad 207F

BPG1274010
BOBE 207F
28 Dec 2018

State of War is a calving ease specialist that we have used on the heifers for several years. 207F was born at the very end of December with a very moderate birth weight. He would be a great addition to someones heifer pen or if you're looking for a bull with calving ease for the cow herd, he will fit the bill. 61E's great granddam calved early January, there is consistency and longevity here.

HART STATE OF WAR 056C
ERIXON LADY 61E

WELSH'S WARSAW 312Z
HART MISS 102A
SS/PRS HIGH VOLTAGE 244X
NUG MISS 513C

Act. BW	Adj. 205 wt	Adj. 365 wt	CE	Canadian BW	Simmental WW	Association YW	EPD's MCE	MWW	Milk
77	760	1386	14.5	0	80.6	114.9	8.4	61.5	21.2



Homo Polled
Purebred Bull

ERIXON

Mr Lad 7G

PG1273952

BOBE 7G

2 Jan 2019

We thought very highly of this young Horizon daughter the day we purchased her from Labatte Simmentals. So broody yet so much class and eye appeal would best describe this leading female. She comes out of an outstanding cow family, the Pocahontas 68M family. Boy, she did not disappointed us the first time around, raising Erixon Magnum 69D! He was a \$32,000 high seller that we A.I'd to ourselves. She also has a beautiful Erixon War Paint bred heifer that just calved. Everything in this pedigree is put together right, but more importantly the look is there.



Dam



Erixon Magnum

DOUBLE BAR D LIBERATOR 412E

KWA LAW MAKER 59C
DOUBLE BAR D GALAXY 101X
MAF R HORIZON 7Y
IPU 68M RED ESSENCE 217X

IPU MS. HORIZON 15B

Act. BW	Adj. 205 wt	Adj. 365 wt	CE	Canadian Simmental Association	EPD's	
98	777	1452	6	BW WW YW MCE MWW Milk	4.4 78.1 109 2.4 57.2 18.1	



Homo Polled Purebred Bull

ERIXON *Lad* 13G

PG1274262 BOBE 13G 3 Jan 2019

RUST HENN RAMBLER 6003

WS PILGRIM H182U
KAPPES SADIE M166
WFL WESTCOTT 24C
ERIXON LADY 109Y

ERIXON LADY 138E

Act. BW	Adj. 205 wt	Adj. 365 wt	CE	Canadian Simmental Association	EPD's	
93	831	1521	5.4	BW WW YW MCE MWW Milk	3.8 80.8 118.2 3.7 64.8 24.4	

We are absolutely thrilled with the look and design of the Rambler calves. All the Rambler bulls are off of first calf heifers. There are 8 of them in the sale. It would be really cool to see a group of them walking with a large group of females.



Homo Polled Purebred Bull

ERIXON *Lad* 25G

PG1274156 BOBE 25G 6 Jan 2019

WHEATLAND KILL SWITCH

WHEATLAND CIRCUIT BREAKER
HR/RR MS CANDACE T73
KNK/CRSR RED BULL 53T
ERIXON LADY 110T

ERIXON LADY 101A

Act. BW	Adj. 205 wt	Adj. 365 wt	CE	Canadian Simmental Association	EPD's	
93	712	1363	3.8	BW WW YW MCE MWW Milk	4.1 73.8 111.1 3.6 61.6 24.7	

We were able to purchase some semen on Wheatland Kill Switch to breed a select group of cows. The Kill Switch bulls calved ease, have large scrotals and substance. Reports from others that have used him is that the females have beautiful udders.





Homo Polled
Purebred Bull

ERIXON
Sad 14G

PG1274348
BOBE 14G
4 Jan 2019

The profile, bone structure, overall mass, and attitude is very high end on this bull. He has a beautiful head shape and great hair. He's the real deal and we think the picture speaks for its self. 347A was a highlight red bred at McMillens the year we purchased her for \$16,000.



KWA Law Maker 59C



Liberator 412E

DOUBLE BAR D LIBERATOR 412E KWA LAW MAKER 59C
DOUBLE BAR D GALAXY 101X
MRL MISS 3347A LFE RED CASINO 3036X
MRL MISS 543U

Act. BW	Adj. 205 wt	Adj. 365 wt	CE	Canadian Simmental Association EPD's	BW	WW	YW	MCE	MWW	Milk
97	755	1302	7.8	3.3	66.4	101	2.9	58	24.8	



Homo Polled Purebred Bull

ERIXON
Sad 26G

PG1274334 BOBE 26G 6 Jan 2019

DOUBLE BAR D LIBERATOR 412E KWA LAW MAKER 59C
DOUBLE BAR D GALAXY 101X
ERIXON LADY 182D MRL PRETTY RECKLESS 68B
ERIXON LADY 133U

Act. BW	Adj. 205 wt	Adj. 365 wt	CE	Canadian Simmental Association EPD's	BW	WW	YW	MCE	MWW	Milk
90	730	1288	5.1	4.1	73.3	107	0.9	58.5	21.8	

Another bull that stems back to our donor cow 133U. 182D is an off age heifer, so this is her first calf. 26G is as dark red as they come, has a nice birthweight and is backed by a great cow family.



Homo Polled Purebred Bull

ERIXON
Sad 32G

PG1273950 BOBE 32G 7 Jan 2019

DOUBLE BAR D LIBERATOR 412E KWA LAW MAKER 59C
DOUBLE BAR D GALAXY 101X
ERIXON LADY 11B ERIXON GAME ON 42Z
ERIXON LADY 4Z

Act. BW	Adj. 205 wt	Adj. 365 wt	CE	Canadian Simmental Association EPD's	BW	WW	YW	MCE	MWW	Milk
87	819	1379	12.5	0.9	73.2	110.2	8.6	64.9	28.3	

The Liberator cattle have great dispositions and 32G is no exception. 32G is extremely long bodied and will sire growthy feedlot steers or great replacement heifers. He was a very early maturing bull that has looked the part since the spring.



Homo Polled Homo Black
Purebred Bull

ERIXON
Sad 17G

BPG1274276
BOBE 17G
4 Jan 2019

Calving Ease

Wow! This first calf Reckless heifer has knocked it out of the park. Here is a bull that is suitable for the heifer pen, but has a huge hip, substance, and great hoof structure. He has a nice splash of white on his face.



HART STATE OF WAR 056C

ERIXON LADY 166E

WELSH'S WARSAW 312Z
HART MISS 102A
MRL PRETTY RECKLESS 68B
ERIXON LADY 87Z

Act. BW	Adj. 205 wt	Adj. 365 wt	CE	Canadian Simmental Association EPD's					
				BW	WW	YW	MCE	MWW	Milk
80	761	1502	10.8	1	79.9	117.5	4.3	58.9	18.9



Homo Polled Purebred Bull

ERIXON *Sad* 43G

PG1274026 BOBE 43G 8 Jan 2019

RUST HENN RAMBLER 6003

ERIXON LADY 75E

WS PILGRIM H182U
KAPPES SADIE M166
WFL WESTCOTT 24C
ERIXON LADY 133U

Act. BW	Adj. 205 wt	Adj. 365 wt	CE	Canadian Simmental Association EPD's					
				BW	WW	YW	MCE	MWW	Milk
83	793	1401	6	2.7	76.2	109.9	1.6	61.8	23.7

Here is another bull that stems back to our 133U donor cow. We don't think you can go wrong buying anything that stems back to 133U. His dam 75E is a true beauty, we really need to do a better job of getting cows pictured out on grass and let the pictures do the talking. Longevity is also built in as 133U has calved again at 12 years of age. 43G will be one of the front runners on sale day.



Homo Polled Purebred Bull

ERIXON *Sad* 44G

PG1274157 BOBE 44G 8 Jan 2019

RUST HENN RAMBLER 6003

ERIXON LADY 102E

WS PILGRIM H182U
KAPPES SADIE M166
WFL WESTCOTT 24C
ERIXON LADY 71Y

Act. BW	Adj. 205 wt	Adj. 365 wt	CE	Canadian Simmental Association EPD's					
				BW	WW	YW	MCE	MWW	Milk
89	872	1430	10.5	1.3	66.8	99.9	5.7	56	22.6

102E is a lovely first time momma cow that has a fantastic udder and is as dark red as you can make them. 44G himself is a very nice balance of calving ease and performance. He is extremely long bodied. Once again, another stellar Westcott x Rambler cross.





Homo Polled
Purebred Bull

ERIXON
Sad 21G

PG1273975
BOBE 21G
4 Jan 2019

We have this large group of Rambler sired bulls in one pen. They sure are an impressive group and are all out of first calf heifers. We literally can't express how happy we are with the Westcott x Rambler cross.



WFL Westcott 24C

RUST HENN RAMBLER 6003
ERIXON MISS LADY 36E

WS PILGRIM H182U
KAPPES SADIE M166
WFL WESTCOTT 24C
ERIXON LADY 110Z

Act. BW	Adj. 205 wt	Adj. 365 wt	CE	Canadian Simmental Association EPD's	Milk
BW	WW	YW	MCE	MWW	
89	794	1477	5.9	3.2 77.8 111.7 3.2 63	24.1



Homo Polled Purebred Bull

ERIXON
Sad 53G

PG1274351 BOBE 53G 10 Jan 2019

DOUBLE BAR D LIBERATOR 412E
NUG MISS 513C
KWA LAW MAKER 59C
DOUBLE BAR D GALAXY 101X
IPU DIABLO 41Y
ERIXON LADY 86A

Act. BW	Adj. 205 wt	Adj. 365 wt	CE	Canadian Simmental Association EPD's	Milk
BW	WW	YW	MCE	MWW	
99	789	1405	8.1	3.6 71.1 106 5.8 60	24.4

We thought very highly of 86A the day we sold her at Friday Night Lights. When we had the opportunity to buy her daughter 513C, we couldn't resist. This is the third calf off of 513C, the other two are females that are retained in our herd. The udder structure and teat size on 513C is top end. 53G is a long bodied, dark red herdsire.



Hetro Polled 3/4 Bull

ERIXON
Sad 54G

PRS1274346 BOBE 54G 10 Jan 2019

ERIXON RELENTLESS 110D
REMINGTON F1 BLUEBLOOD328
MRL PRETTY RECKLESS 68B
SKORS BLACK RENOWNED 304Y
REMINGTON ON TARGET 2S
ALCHEMY BLUEBLOOD 21M

Act. BW	Adj. 205 wt	Adj. 365 wt	CE	Canadian Simmental Association EPD's	Milk
BW	WW	YW	MCE	MWW	
103	839	1367	2.7	4.7 76.2 112.2 0.5 56.3	18.2

Here is a 3/4 blood that comes out of a gorgeous uddered On Target cow. This is an all around solid, really functional bull out of a great cow. She keeps giving us bull calves and we would really like to get a replacement heifer out of her.



Homo Polled
Purebred Bull

ERIXON
Lad 23G

PG1273942
BOBE 23G
5 Jan 2019

What a bull! 23G has been a standout since the beginning and it has been a joy to watch his develop. He has a real nice white face and attitude. He is the bull in the picture with Griffin and Holden that is on the backcover of this catalog.



Erixon Orbit

ERIXON ORBIT 20C

ERIXON LADY 4X



COME AS U R RED ROCKET
ERIXON LADY 18Y
TNT GUNNER N208
ERIXON LADY 59S

Act. BW	Adj. 205 wt	Adj. 365 wt	CE	Canadian Simmental Association EPD's					
				BW	WW	YW	MCE	MWW	Milk
103	839	1437	1.8	6	82.9	116.4	2.4	64.1	22.6



Homo Polled Purebred Bull

ERIXON*Lad* 59G

PG1273958 BOBE 59G 11 Jan 2019

CCLT ALLIANCE 91C

ERIXON LADY 21U

WS PILGRIM H182U
BROOKS SHINIA 1A
COTT-GFI FULLBACK 0038N
ERIXON LADY 50N

Act. BW	Adj. 205 wt	Adj. 365 wt	CE	Canadian Simmental Association EPD's					
				BW	WW	YW	MCE	MWW	Milk
91	810	1359	5	4.4	72	99	2.8	61.4	25.4

59G is a great herd sire prospect that has extra size, length, and pounds. He will sire cattle that will grow, gain and weigh heavy. There is performance and milk built into this pedigree. 21U herself is extremely big bodied and stands on a perfect hoof. This will be the final bull to sell off good old 21U. She is also the dam of 126Y who has been an extra special donor cow for us.



Homo Polled Purebred Bull

ERIXON*Lad* 62G

PG1274025 BOBE 62G 11 Jan 2019

RF CAPACITY 742E

ERIXON LADY 73Z

WFL WESTCOTT 24C
RF FAMOUS 409B
HARVIE JDF WALLBANGER111X
ERIXON LADY 16T

Act. BW	Adj. 205 wt	Adj. 365 wt	CE	Canadian Simmental Association EPD's					
				BW	WW	YW	MCE	MWW	Milk
93	714	1372	5	5.4	79.7	125.4	1.7	59.7	19.8

This will be the first set of calves to sell off of RF Capacity. Capacity is a black bull, and the dam, 73Z is black. Being out of 2 black parents adds some twist on the pedigree of 62G. He should also calve real nice on a young group of cows if you are wanting a bull with more calving ease.





Homo Polled
Purebred Bull

ERIXON
Lad 29G

PG1273944
BOBE 29G
6 Jan 2019

Powerhouse! 29G is put together in a very correct package. He has an exceptional hair coat, big hoof, a huge top and just overall mass. He was part of our show string that we took to Agribition. He was your Reserve Champion Simmental bull calf in the President's Classic show. His dam, 5B has one heck of a good udder and progeny profile. Her first calf was a bull that made his way out to Big Rock Simmentals in BC, a daughter went to KT Ranches and her third calf who is a full sister to 29G sits in the replacement pen. 29G is an extremely well put together package!



Erixon War Paint

ERIXON WAR PAINT 42D
ERIXON LADY 5B

NUG ROYAL RED 324A
RF SCREAM 215Z
WFL IDENTITY 23X
ERIXON LADY 45Z

Act. BW	Adj. 205 wt	Adj. 365 wt	CE	Canadian BW	Simmental WW	Association YW	EPD's MCE	MWW	Milk
98	805	1442	6.5	4	76.8	109.7	4.7	57.3	18.9



Hetro Polled Purebred Bull

ERIXON
Lad 72G

PG1273962 BOBE 72G 12 Jan 2019

DOUBLE BAR D LIBERATOR 412E
ERIXON LADY 25B

KWA LAW MAKER 59C
DOUBLE BAR D GALAXY 101X
IPU DIABLO 41Y
ERIXON LADY 31P

Act. BW	Adj. 205 wt	Adj. 365 wt	CE	Canadian BW	Simmental WW	Association YW	EPD's MCE	MWW	Milk
101	724	1404	6.7	4.2	69.1	106.8	5.1	58.2	23.6

25B is sharp fronted and angular. She is very good at passing on that long neck and clean front to her calves. As she should being a direct daughter of 31P who always caught the eye of visitors and was a personal favorite for years.



Homo Polled Purebred Bull

ERIXON
Lad 76G

PG1274023 BOBE 76G 13 Jan 2019

DOUBLE BAR D LIBERATOR 412E
ERIXON LADY 71Y

KWA LAW MAKER 59C
DOUBLE BAR D GALAXY 101X
KOP CROSBY 137W
ERIXON LADY 4T

Act. BW	Adj. 205 wt	Adj. 365 wt	CE	Canadian BW	Simmental WW	Association YW	EPD's MCE	MWW	Milk
99	691	1299	8.6	3.4	62.7	95	7.7	61.7	30.3

71Y has been a very consistent cow over the years. She has never missed producing a calf and has produced 2 breeder bulls for Perkins and Mitchell Cattle Co.



Homo Polled
Purebred Bull

ERIXON
Lad 34G

PTG1274385
BOBE 34G
7 Jan 2019

34G will be one of the heavy weights on sale day. If you're looking for some extra grow and length of body he puts that all together in a nice package. He is the result of some embryos we purchased off the great RF Certainly Flirtin 532C. She would be considered one of the most productive and attractive red donors in the Simmental breed. If its extra growthy steers you are trying to raise or replacement females with beautiful udders, we believe 34G can cover it all.



Dam

SPRINGCREEK BLUE CHIP 9D
RF CERTAINLY FLIRTIN 532C

SPRINGCREEK LINER 56U
SPRINGCREEK TARA 111R
SVS CAPTAIN MORGAN 11Z
RF CERTAINLY FLIRTIN 202Z

Act. BW	Adj. 205 wt	Adj. 365 wt	CE	Canadian	Simmental	Association	EPD's			
				BW	WW	YW	MCE	MWW	Milk	
102	843	1529	4.6	3	77.6	117.7	3.2	60	21.2	



Homo Polled Purebred Bull

ERIXON *Lad* 79G

PG1274243 BOBE 79G 13 Jan 2019

ERIXON WAR PAINT 42D

ERIXON LADY 106D

NUG ROYAL RED 324A
RF SCREAM 215Z
MRC INVESTOR 60B
ERIXON LADY 29Y

Act. BW	Adj. 205 wt	Adj. 365 wt	CE	Canadian	Simmental	Association	EPD's			
				BW	WW	YW	MCE	MWW	Milk	
95	837	1381	5.5	4.6	79	115.6	3.5	59	19.5	

106D is more than proving herself as one of the young front runners in the herd. We just sold a Erixon Magnum sired bred heifer at the Border City sale in Lloydminster to MJT. This dark, dark red bull puts it all together in one very complete package. You have to appreciate his color, muscle shape and hair coat.



Maternal Sister



Homo Polled Purebred Bull

ERIXON *Lad* 86G

PG1274273 BOBE 86G 14 Jan 2019

DOUBLE BAR D LIBERATOR 412E

ERIXON LADY 162D

KWA LAW MAKER 59C
DOUBLE BAR D GALAXY 101X
ERIXON HIGH ROLLER 143B
ERIXON LADY 31P

Act. BW	Adj. 205 wt	Adj. 365 wt	CE	Canadian	Simmental	Association	EPD's			
				BW	WW	YW	MCE	MWW	Milk	
94	775	1413	6.2	3.9	71.3	111.2	2.6	61.9	26.2	

162D is a beautiful young cow who stems back to one of the favorite old girls, 31P. The group of bulls are not over conditioned in our opinion. They are grown out and ready to work with a hard cover.





Homo Polled
Hetro Black
Purebred Bull
ERIXON
Lad 56G

BPG1274335
BOBE 56G
10 Jan 2019

The granddam of 56G, Erixon Lady 126Y was the anchor of our 2013 show string. She had many accomplishments throughout the year, with the grandest being named top 10 in the Royal Bank Cup Supreme at Agribition. 126Y sure raised us some good ones over the years! 191C will continue in her footsteps as she looks just like her dam and cranked out one heck of an Alliance sired bull calf. He will be one of the heavy weights on sale day.



Granddam

CCLT ALLIANCE 91C
ERIXON LADY 191C

WS PILGRIM H182U
BROOKS SHINIA 1A
SPRINGCREEK OLYMPIAN 66A
ERIXON LADY 126Y

Act. BW	Adj. 205 wt	Adj. 365 wt	CE	Canadian Simmental Association EPD's					
				BW	WW	YW	MCE	MWW	Milk
104	786	1372	5.5	5.6	78	109.7	2.6	57.8	18.8



Homo Polled Purebred Bull

ERIXON *Lad* 94G

PG1274280 BOBE 94G 16 Jan 2019

DOUBLE BAR D LIBERATOR 412E KWA LAW MAKER 59C
DOUBLE BAR D GALAXY 101X
ERIXON LADY 172D MRC INVESTOR 60B
ERIXON LADY 67Y

Act. BW	Adj. 205 wt	Adj. 365 wt	CE	Canadian Simmental Association EPD's					
				BW	WW	YW	MCE	MWW	Milk
87	737	1321	7.6	3.4	62.1	90.4	5.6	56.3	25.2

172D is an Investor sired cow that is easy to appreciate. We walked Investor here for a few years and we are just starting to see the potential of these beautiful young females.



Homo Polled Homo Black Purebred Bull

ERIXON *Lad* 110G

BPG1274341 BOBE 110G 20 Jan 2019

WHEATLAND AFFILIATE 7128E CCLT ALLIANCE 91C
WHEATLAND LADY 308A
PORTERS 234T RF LEXUS L60
PRL PORT ALICE 290P

Act. BW	Adj. 205 wt	Adj. 365 wt	CE	Canadian Simmental Association EPD's					
				BW	WW	YW	MCE	MWW	Milk
89	741	1277	5.5	3.5	69.1	102.5	1.3	54	19.4

At 13 years of age 234T has calved again. Over the years she has had 4 daughters. All 4 of them are here and in production. Her highlight bull calf is Erixon Why Not 111B who we showed and has done an outstanding job for Trendsetter Livestock. This is a top end cow family that has longevity bred in.



Affiliate Sire



Hetro Polled
Purebred Bull

ERIXON
Sad 73G

PG1274161
BOBE 73G
13 Jan 2019

73G has been a standout since the beginning and was pegged to be part of the show string early on in the season. He was a class winner at Agribition. 103X has sure done well for us over the years. One of the highlights would have been her Erixon Wellington daughter that sold in Friday Night Lights to Maxwell Simmentals. 103X is the great granddam 53G and great great granddam of 207F.



Maternal Sister

DOUBLE BAR D LIBERATOR 412E
ERIXON LADY 103X

KWA LAW MAKER 59C
DOUBLE BAR D GALAXY 101X
WHEATLAND RED ACE 747T
MISS ARNOLD L2465

Act. BW	Adj. 205 wt	Adj. 365 wt	CE	Canadian Simmental Association EPD's					
				BW	WW	YW	MCE	MWW	Milk
91	884	1414	9.8	1.3	65.4	95.2	5.2	58.7	26



Homo Polled Purebred Bull

ERIXON*Sad* 115G

PG1274324 BOBE 115G 21 Jan 2019

RUST HENN RAMBLER 6003
ERIXON LADY 174E

WS PILGRIM H182U
KAPPES SADIE M166
WFL WESTCOTT 24C
ERIXON LADY 2P

Act. BW	Adj. 205 wt	Adj. 365 wt	CE	Canadian Simmental Association EPD's					
				BW	WW	YW	MCE	MWW	Milk
73	731	1257	9.6	0	61.6	90.3	4.9	55.9	25.1

Here is a bull that can be used in your heifer pen. He isn't the biggest in size and stature, but he is made to calve easy. Tonnes of maternal strength being out of the 2P cow family.



Homo Polled Purebred Bull

ERIXON*Sad* 119G

PG1274267 BOBE 119G 22 Jan 2019

RUST HENN RAMBLER 6003
ERIXON LADY 149E

WS PILGRIM H182U
KAPPES SADIE M166
WFL WESTCOTT 24C
ERIXON LADY 90U

Act. BW	Adj. 205 wt	Adj. 365 wt	CE	Canadian Simmental Association EPD's					
				BW	WW	YW	MCE	MWW	Milk
89	860	1481	6.1	3.2	81.6	121.4	2.6	64	23.2

Scoop yourself up a Rambler x Westcott when you have the opportunity as this cross worked exceptionally well. 149E is off a cow that we showed as a heifer calf and bred. 119G has a real stretchy front end and should calve real nice.





Homo Polled
Purebred Bull

ERIXON
Lad 84G

BPG1274251
BOBE 84G
14 Jan 2019

We are beginning to sound like a broken record, but here is another real good Westcott x Rambler. It would be really neat to see a few of these bulls out walking together in a group of cows.



Rambler

RUST HENN RAMBLER 6003
ERIXON LADY 120E

WS PILGRIM H182U
KAPPES SADIE M166
WFL WESTCOTT 24C
ERIXON LADY 214R

Act. BW	Adj. 205 wt	Adj. 365 wt	CE	Canadian Simmental Association EPD's	BW	WW	YW	MCE	MWW	Milk
93	772	1447	4	4.7	76.7	111.7	2.7	61.2	22.8	



Homo Polled Purebred Bull

ERIXON
Lad 123G

PG1273982 BOBE 123G 22 Jan 2019

DOUBLE BAR D LIBERATOR 412E
ERIXON LADY 37W

KWA LAW MAKER 59C
DOUBLE BAR D GALAXY 101X
TNT GUNNER N208
ERIXON LADY 50N

Act. BW	Adj. 205 wt	Adj. 365 wt	CE	Canadian Simmental Association EPD's	BW	WW	YW	MCE	MWW	Milk
102	727	1433	5.6	4.6	63.8	93.2	4.1	56.6	24.7	

Another Liberator sired bull. Liberator is the perfect balance of calving ease and performance. This bull has a nice splash of white on his face just like his dam.



Homo Polled Purebred Bull

ERIXON
Lad 127G

PG1274260 BOBE 127G 24 Jan 2019

DOUBLE BAR D LIBERATOR 412E
ERIXON LADY 133U

KWA LAW MAKER 59C
DOUBLE BAR D GALAXY 101X
LBR CROCKET R81
ERIXON MISS JAL 44P

Act. BW	Adj. 205 wt	Adj. 365 wt	CE	Canadian Simmental Association EPD's	BW	WW	YW	MCE	MWW	Milk
92	719	1305	5.4	3.4	62.2	93.1	0.7	59.4	28.3	

133U has put bulls into purebred operations and numerous bulls into commercial operations. We had never sold a daughter out of 133U until this past December. That speaks for just how much we like this cow family. These bulls will work and have longevity and stayability bred into them.



Homo Polled Homo Black
Purebred Bull

ERIXON
Sad 88G

BPG1274353
BOBE 88G
15 Jan 2019

88G has extra style and maternal power. There is tons of structural correctness and quality in this guy. The profile on him is very high end, the way he flows from his shoulder into his elongated neck is a characteristic that is hard not to focus on. We can't say enough good things about 717Y. She is a beauty to look at, has stellar EPD's and most importantly she can raise the good ones! She raised a \$34,000 heifer calf that sold at Friday Night Lights, we have flushed her, have multiple daughters in the herd, sold breeder bulls.....she can do it all

WHEATLAND AFFILIATE 7128E

REMINGTON RINA 717Y

CCLT ALLIANCE 91C
WHEATLAND LADY 308A
OLF ODIN U5
REMINGTON DUKE 113W



Dam

Act. BW	Adj. 205 wt	Adj. 365 wt	CE	Canadian Simmental Association EPD's					
				BW	WW	YW	MCE	MWW	Milk
97	823	1372	7.2	3.3	79	117.3	3.3	60.4	20.9



Hetro Polled Homo Black Purebred Bull

ERIXON*Sad* 130G

BPG1274012 BOBE 130G 25 Jan 2019

CCLT ALLIANCE 91C

ERIXON LADY 63B

WS PILGRIM H182U
BROOKS SHINIA 1A
HARVIE JDF WALLBANGER111X
EDN NIKI 37N

Act. BW	Adj. 205 wt	Adj. 365 wt	CE	Canadian Simmental Association EPD's					
				BW	WW	YW	MCE	MWW	Milk
94	727	1189	8.4	2.7	66.7	97.5	3.2	53.1	19.7

This is the second group of Alliance sired progeny that we have sold. He calved real good on our cows. 130G has some built in calving ease. A full sib by pedigree to 130G was a highlight and lead off lot at the Agribition sale in November going to Rafter 4T.



Full Sib



Hetro Polled Purebred Bull

ERIXON*Sad* 134G

PG1273953 BOBE 134G 26 Jan 2019

WFL WESTCOTT 24C

ERIXON LADY 17B

TNT 90 PROOF Z401
WFL SWEET LICIOUS 1044X
IPU DIABLO 41Y
ERIXON LADY 70Z

Act. BW	Adj. 205 wt	Adj. 365 wt	CE	Canadian Simmental Association EPD's					
				BW	WW	YW	MCE	MWW	Milk
105	841	1551	1.8	6.3	92.5	138.6	-0.3	65.2	18.9

This will be one of the last Westcott bulls that we will have on offer. The Westcott bulls have been highly sought after by the commercial cattlemen the past several years. With all the substance and performance 134G has it is only natural that he started out life with some size but that was mostly due to his length of body. His dam had no troubles spiting him out and he was up and sucking quickly.





Homo Polled
Purebred Bull

ERIXON
Lad 93G

PG1273971
BOBE 93G
15 Jan 2019

If you're looking to add some extra growth and length of spine to a calf crop mark 93G down in the catalog. He is a good haired individual just like his gorgeous uddered dam. This guy has to be appreciated most when you view him from the rear and see his huge top and the spring of rib he shows.

WHEATLAND KILL SWITCH
ERIXON LADY 34C

WHEATLAND CIRCUIT BREAKER
HR/RR MS CANDACE T73
SUNNY VALLEY DAKOTA 9Z
ERIXON LADY 57Z

Act. BW	Adj. 205 wt	Adj. 365 wt	CE	Canadian Simmental Association EPD's
				BW WW YW MCE MWW Milk
105	822	1401	3.8	5.3 78.3 114.3 4.4 67.4 28.2



Homo Polled Purebred Bull

ERIXON
Lad 139G

PG1273989 BOBE 139G 26 Jan 2019

ERIXON MAGNUM 69D
ERIXON LADY 43E

KUNTZ SHERIFF 8A
IPU MS. HORIZON 15B
MRL CAPONE 130B
ERIXON LADY 83C

Act. BW	Adj. 205 wt	Adj. 365 wt	CE	Canadian Simmental Association EPD's
				BW WW YW MCE MWW Milk
81	690	1205	10.8	0.8 59.8 84.6 5.4 51.6 21.7

We have used Magnum for several years in our program, he calves really good. 139G may not be the biggest bull, but he has the build, look, epds and pedigree to calve on heifers.



Homo Polled Purebred Bull

ERIXON
Lad 142G

PG1274044 BOBE 142G 28 Jan 2019

ERIXON WAR PAINT 42D
ERIXON LADY 78Y

NUG ROYAL RED 324A
RF SCREAM 215Z
KOP CROSBY 137W
ERIXON LADY 90U

Act. BW	Adj. 205 wt	Adj. 365 wt	CE	Canadian Simmental Association EPD's
				BW WW YW MCE MWW Milk
96	773	1463	4.1	3.9 72.2 108.2 3 58.3 22.2

Length of body is always an asset when raising cattle. Here is a bull that displays extra length of spine and carries that into a real clean cut, elongated neck. Lots of the guess work is done here, the maternal and paternal sides of the pedigree are very strong. 78Y might just be our favorite cow on the farm to look at. She carries an udder of perfection, thick dense hair, and is really sharp fronted. If you're looking to keep some replacement females we highly recommend 142G.



Homo Polled
Purebred Bull

ERIXON *Lad* 144G

PG1275577
BOBE 144G
29 Jan 2019



144G is a real beef bull, explosive muscle and thickness complete with volume and extra length. 28C is a real good haired Diablo sired female. The Diablo females have good udders, are hairy hided, and have proven that they can get the job done. When we wean the bull calves it gives us a chance to truly analyze the quality we have on a daily basis. 144G has been a pleasure to watch change and grow as the months led up to bull sale time.

DOUBLE BAR D LIBERATOR 412E

ERIXON LADY 28C

KWA LAW MAKER 59C
DOUBLE BAR D GALAXY 101X
IPU DIABLO 41Y
ERIXON LADY 85A

Act. BW	Adj. 205 wt	Adj. 365 wt	CE	Canadian Simmental Association EPD's					
BW	WW	YW	MCE	MWW	Milk				
93	765	1399	9	3.2	71.9	107.5	5.3	59.4	23.4



Homo Polled Purebred Bull

ERIXON *Lad* 146G

PG1274016 BOBE 146G 29 Jan 2019

DOUBLE BAR D LIBERATOR 412E

ERIXON LADY 65Z

KWA LAW MAKER 59C
DOUBLE BAR D GALAXY 101X
KOP CROSBY 137W
ERIXON LADY 2P

Act. BW	Adj. 205 wt	Adj. 365 wt	CE	Canadian Simmental Association EPD's					
BW	WW	YW	MCE	MWW	Milk				
96	846	1443	8	3.1	72.5	109.4	6.6	63.6	27.3

Sometimes we question whether or not we should catalogue the bulls by cow families. We strongly believe that a great cow family needs to stand behind any cattle purchase. 65Z is part of a great cow family!



Homo Polled Homo Black Purebred Bull

ERIXON *Lad* 165G

BPG1273956 BOBE 165G 5 Feb 2019

WHEATLAND AFFILIATE 7128E

ERIXON LADY - 18Z

CCLT ALLIANCE 91C
WHEATLAND LADY 308A
HARVIE JDF WALLBANGER111X
PORTERS 234T

Act. BW	Adj. 205 wt	Adj. 365 wt	CE	Canadian Simmental Association EPD's					
BW	WW	YW	MCE	MWW	Milk				
99	827	1397	4.6	4.3	77.7	118.7	-0.2	57.3	18.4

It's not the first time that his dam has cranked out a good one. Take a good look at her picture, she is a special one with an exceptional udder. 165G will be one of the bigger black bulls we have on offer.





Homo Polled Homo Black
Purebred Bull

ERIXON
Lad 151G

BPG1274043
BOBE 151G
31 Jan 2019

When we first set eyes on Affiliate we knew that we needed to be part of the story the \$200,000 valued bull would write for many years to come. His semen is highly exclusive and there will not be many opportunities to purchase his progeny. 77D has more than exceeded our expectations. This bull is her second calf and her first calf was a heifer that sold through Friday Night Lights out to Ontario to Indian River Cattle.



Maternal Sib

WHEATLAND AFFILIATE 7128E
ERIXON LADY 77D

CCLT ALLIANCE 91C
WHEATLAND LADY 308A
MRL PRETTY RECKLESS 68B
SPAW L'ADOUR 204Z

Act. BW	Adj. 205 wt	Adj. 365 wt	CE	Canadian Simmental Association EPD's	BW	WW	YW	MCE	MWW	Milk
100	817	1438	1.7	6	77.1	111.9	-0.2	57.4	18.8	



Homo Polled Purebred Bull

ERIXON
Lad 166G

PTG1274374 BOBE 166G 7 Feb 2019

CCLT ALLIANCE 91C
ERIXON LADY 24D

WS PILGRIM H182U
BROOKS SHINIA 1A
MRL PRETTY RECKLESS 68B
ERIXON LADY 87Z

Act. BW	Adj. 205 wt	Adj. 365 wt	CE	Canadian Simmental Association EPD's	BW	WW	YW	MCE	MWW	Milk
94	883	1496	1.9	3.8	73.3	103	-1	54	17.3	

Here is a very special and unique mating. Lady 24D was crowned the 2016 Little Lady Classic Jackpot Champion, and Heifer Calf Champion at Brandon Ag Ex., along with Reserve Senior Heifer Calf Champion at Agribition. She was the most talked about heifer calf that we have ever had the privilege of showing and selling.

Dam



Hetro Polled Purebred Bull

ERIXON
Lad 169G

PG1273986 BOBE 169G 9 Feb 2019

DOUBLE BAR D LIBERATOR 412E
ERIXON LADY 41C

KWA LAW MAKER 59C
DOUBLE BAR D GALAXY 101X
ERIXON REVELSTOCK 41A
ERIXON LADY 122Z

Act. BW	Adj. 205 wt	Adj. 365 wt	CE	Canadian Simmental Association EPD's	BW	WW	YW	MCE	MWW	Milk
98	854	1320	8.4	3.6	75.5	117.7	5.3	64.9	27.1	

We sold a daughter off 41C in December at the Border City Sale in Lloydminster out to Ontario. She was our lead off bred there and was a beauty to look at. 169G is a maternal brother to Lot 1.



Homo Polled Hetro Black
Purebred Bull

ERIXON
Lad 153G

BPG1274327
BOBE 153G
1 Feb 2019

These State of War calves have sure impressed us as they have aged. They were born with ease and have kept on growing full speed throughout the summer and fall. They are a great option if you're looking to buy a bull that has some built in calving ease. Once again, 179D is a daughter of the great donor cow 133U.



HART STATE OF WAR 056C
ERIXON LADY 179D

WELSH'S WARSAW 312Z
HART MISS 102A
MRL PRETTY RECKLESS 68B
ERIXON LADY 133U

Act. BW	Adj. 205 wt	Adj. 365 wt	CE	Canadian Simmental Association EPD's					
				BW	WW	YW	MCE	MWW	Milk
93	780	1415	7.8	3.1	83.2	120.1	2.7	62.2	20.6



Homo Polled Purebred Bull

ERIXON
Lad 170G

PG1274053 BOBE 170G 11 Feb 2019

WFL WESTCOTT 24C
ERIXON LADY 82T

TNT 90 PROOF Z401
WFL SWEET LICIOUS 1044X
STF JALAPENO
ERIXON LADY 29H

Act. BW	Adj. 205 wt	Adj. 365 wt	CE	Canadian Simmental Association EPD's					
				BW	WW	YW	MCE	MWW	Milk
99	843	1433	2.7	5.1	83.5	123.9	1.8	65.7	23.9

This will be one of our last Westcott bulls to sell. We were part of the inaugural group that received Westcott semen and have used him to his full capacity here. We have numerous females in the herd off him and they're big bodied highly productive young cows.



Homo Polled Homo Black Purebred Bull

ERIXON
Lad 175G

BPG1274342 BOBE 175G 19 Feb 2019

WHEATLAND AFFILIATE 7128E
SKORS BLACK RENOWNED 304Y

CCLT ALLIANCE 91C
WHEATLAND LADY 308A
SKORS BLACK ENTICER 4W
SKORS MS RENOWNED 246U

Act. BW	Adj. 205 wt	Adj. 365 wt	CE	Canadian Simmental Association EPD's					
				BW	WW	YW	MCE	MWW	Milk
102	844	1324	3.9	5.2	76.5	114.3	1.1	57.7	19.4

304Y has turned out to be one heck of a productive cow! She is the mother of Erixon Relentless 110D who was a high seller in our 2017 sale going to Deeg Simmentals. She also has a State of War bred heifer who just calved and looks exceptional.



Dam



Homo Polled
Purebred Bull

ERIXON
Sad 173G

PG1273957
BOBE 173G
16 Feb 2019

This bull is a stout made package that has some extra middle bred into him. His dam is built the same way. 173G is full of meat and muscle and is easy to look at. 18Y is the dam of a bull we call Orbit that we used in our program.



Erixon Orbit

DOUBLE BAR D LIBERATOR 412E KWA LAW MAKER 59C
DOUBLE BAR D GALAXY 101X
ERIXON LADY 18Y WHEATLAND RED ACE 747T
ERIXON LADY 10U

Act. BW	Adj. 205 wt	Adj. 365 wt	CE	Canadian Simmental Association EPD's					
BW	WW	YW	MCE	MWW	Milk				
94	902	1579	7.5	3	76.6	113	5.1	63	24.7



Dam of Liberator



Homo Polled Purebred Bull

ERIXON*Sad* 180G

PG1273951 BOBE 180G 21 Feb 2019

DOUBLE BAR D LIBERATOR 412E KWA LAW MAKER 59C
DOUBLE BAR D GALAXY 101X
ERIXON LADY 14D ERIXON REVELSTOCK 41A
ERIXON LADY 27W

Act. BW	Adj. 205 wt	Adj. 365 wt	CE	Canadian Simmental Association EPD's					
BW	WW	YW	MCE	MWW	Milk				
98	875	1497	4.2	5	75	116.1	0	63.4	25.9

Stout, stout, stout! 180G is a very impressive one that is packed full of red meat and muscle. He has been a very easy keeper. Take note that he is one of the younger bulls in the sale.



Dam



Homo Polled Purebred Bull

ERIXON*Sad* 194G

PG1273938 BOBE 194G 5 Mar 2019

DOUBLE BAR D LIBERATOR 412E KWA LAW MAKER 59C
DOUBLE BAR D GALAXY 101X
ERIXON LADY 2P HOOK'S RED QUORUM 55H
ERIXON LADY 8M

Act. BW	Adj. 205 wt	Adj. 365 wt	CE	Canadian Simmental Association EPD's					
BW	WW	YW	MCE	MWW	Milk				
97	878	1431	10.1	2	66	101.6	6.3	58.4	25.4

This will be the last bull to sell out of the greatest cow we have ever raised. Longevity is bred into this cow family and at 15 years of age 2P was pregnant again. Unfortunately with the third year of drought hitting us some tough decisions had to be made. I could write a long long list of her accomplishments over the years, but I won't. Just know this, her daughters are some of the best we have on the farm and she had an udder of perfection at age 15.


 Polled
 Purebred Heifer
ERIXON
Miss Lady 5G
 BPG1273988
 BOBE 5G
 1 Jan 2019

State of War is a calving ease specialist that we have used on the heifers for several years. We are just calving the first daughters out of him and are very happy. Lot #26 is a maternal sib to 42E.



HART STATE OF WAR 056C
ERIXON LADY 42E

WELSH'S WARSAW 312Z
 HART MISS 102A
 MRL PRETTY RECKLESS 68B
 PORTERS 234T

Act. BW	Adj. 205 wt	Adj. 365 wt	CE	Canadian Simmental Association EPD's						Milk
BW	WW	YW	MCE	MWW						
68	708	1042	10	2.5	84.8	123.2	4.5	56.9	14.5	


 Polled
 Purebred Heifer
ERIXON
Lady 6G
 PG1274154
 BOBE 6G
 2 Jan 2019

We were able to acquire some semen on the great Wheatland Kill Switch bull. His sons push the scale down and have large scrotals. We have heard nothing but good on the udder structure of his daughters. 6G should set up a exceptional udder as her dam, 98X is one of the best uddered cows we have had.



WHEATLAND KILL SWITCH
ERIXON LADY 98X

WHEATLAND CIRCUIT BREAKER
 HR/RR MS CANDACE T73
 LBR CROCKET R81
 ERIXON LADY 21M

Act. BW	Adj. 205 wt	Adj. 365 wt	CE	Canadian Simmental Association EPD's						Milk
BW	WW	YW	MCE	MWW						
92	813	1125	7.7	3.9	76.5	112.1	5.8	67.4	29.1	



Polled
Purebred Heifer

ERIXON
Lady 61G

PG1274163
BOBE 61G
11 Jan 2019

Here is the first Liberator female that we are offering up for sale. We picked one that had the look and came out of one of the best cow families! Erixon Lady 2P is the granddam of 61G. She has been one of the best cows that we have had the honor of owning. We have held on very tightly to any progeny that had 2P in the pedigree over the years. Take advantage of this opportunity to purchase into a highly productive cow family out of an exciting herdsire.

DOUBLE BAR D LIBERATOR 412E
ERIXON LADY 104D

KWA LAW MAKER 59C
DOUBLE BAR D GALAXY 101X
TNT BOOTLEGGER Z268
ERIXON LADY 2P

Act. BW	Adj. 205 wt	Adj. 365 wt	CE	Canadian BW	Simmental WW	Association YW	EPD's MCE	EPD's MWW	Milk
88	636	1236	10.9	1.5	62.5	95.6	6.1	59.3	28



Polled
Purebred Heifer

ERIXON
Lady 83G

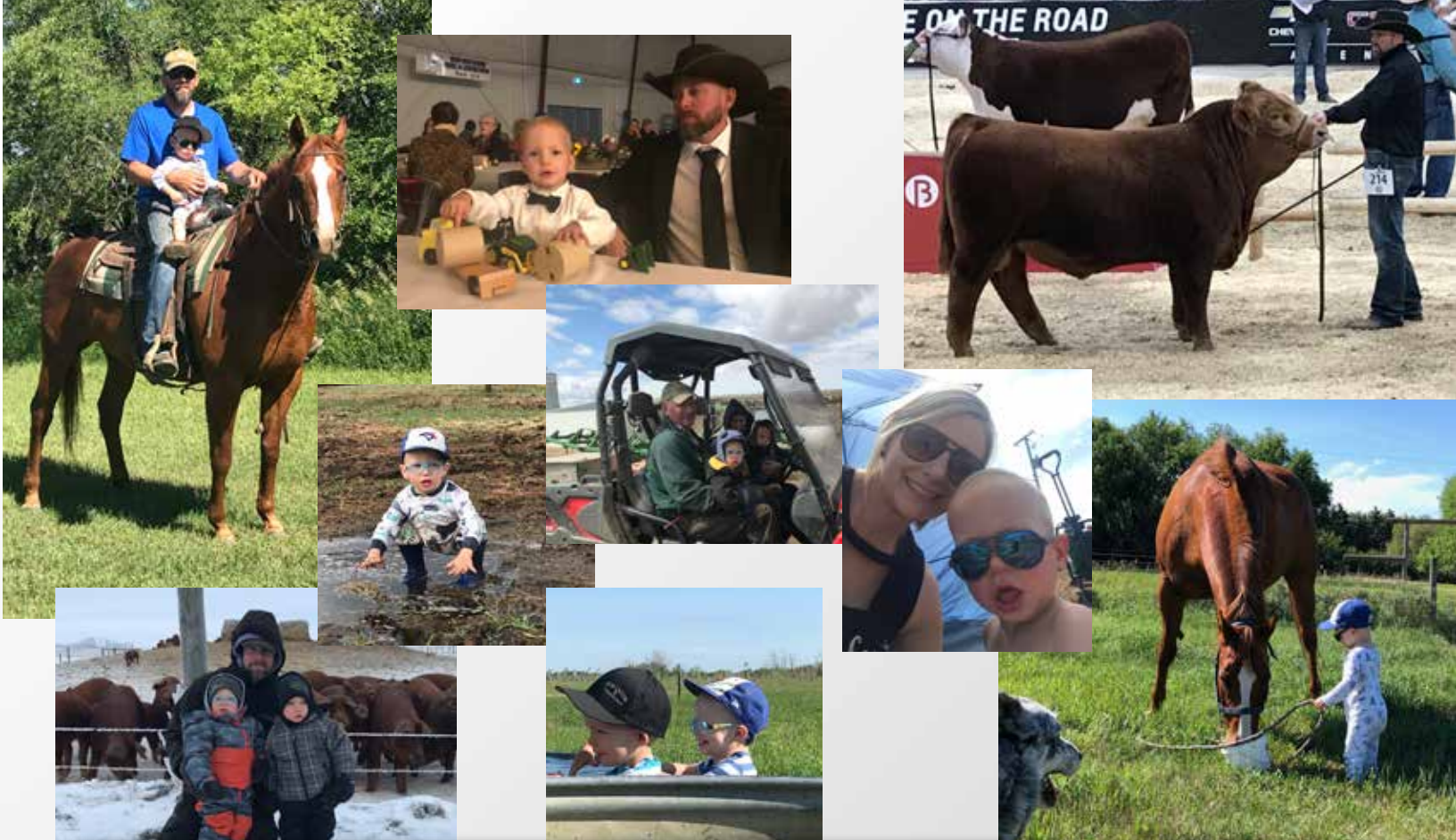
BPG1274021
BOBE 83G
14 Jan 2019

Her dam, Erixon Lady 69C is as big bodied and complete of a young cow as we have. This young Dealer sired female has a very bright future in our herd. Her first calf was sired by Grand Fortune and sold at Friday Night Lights. The cattle that sell at Friday Night Lights are the cream of the crop. Her second calf was a heifer that sold through this very sale.

WHEATLAND AFFILIATE 7128E
ERIXON LADY 69C

CCLT ALLIANCE 91C
WHEATLAND LADY 308A
ERIXON DEALER 63Z
SPAW L'ADOUR 204Z

Act. BW	Adj. 205 wt	Adj. 365 wt	CE	Canadian BW	Simmental WW	Association YW	EPD's MCE	EPD's MWW	Milk
103	717	1019	2.9	6	77.9	119	0.6	60	21



What do the numbers mean?

CSA 2019 Fall Breed Average EPD's

CE	BW	WW	YW	MCE	MWW	Milk
6.7	3.4	69.6	102.8	4.0	60.4	25.2

Calving Ease - The ease with which a bull's calves are born. EPDs are reported as deviations in the percent unassisted births. When comparing calving ease EPDs of two sires, the larger EPD indicates a higher percent of unassisted births for calves sired by that bull.

Birth Weight - Calf weight at birth adjusted to a mature dam equivalent. Expected progeny difference is reported in pounds. The larger EPD indicates a heavier average birth weight.

Weaning Weight - Calf weight taken between 160 and 250 days of age and adjusted to 205 days of age and a mature dam equivalent. Expected progeny difference is reported in pounds. The larger EPD indicates a heavier average weaning weight for calves sired by that bull.

Yearling Weight - Weight taken between 330 and 440 days of age and adjusted to 365 days of age and a mature dam equivalent. Expected progeny difference is reported in pounds. The larger EPD indicates a heavier average yearling weight for calves sired by that bull.

Maternal Calving Ease - The ease at which a sire's daughter calve as first calf heifers. The larger EPD indicates a higher percentage of unassisted births for calves born to the sire's daughters.

Maternal Weaning Weight - The weaning weight of animal's daughters calves. Expected progeny difference is reported in pounds. The EPD value predicts the difference in average 205 day weight of an animal's daughters calves compared to calves from daughters of all other animals evaluated. The evaluation reflects both the maternal ability of an animal's daughters and the growth potential of their calves. The larger EPD indicates heavier weights due to daughters ability to produce heavier calves.

Milk - Expected progeny difference is reported in pounds of calf weaning weight. The milk EPD is a predictor of a sire's genetic merit for milk as expressed in his daughters, or in other words the part of weaning weight attributed to milk genes. The larger EPD indicates heavier average weaning weights due to daughters greater maternal ability.





BOHRSON
MARKETING SERVICES

RR 4 - SITE 7 - BOX 28 :: OLDS, AB :: T4H 1T8



RETURN POSTAGE GUARANTEED
PORT DE RETOUR GARANTI



Integrity • Commitment • Quality