



BULL & FEMALE SALE

Monday, FEBRUARY 28, 2022 at 1:00 pm

ERIXON



SIMMENTALS BULL & FEMALE SALE

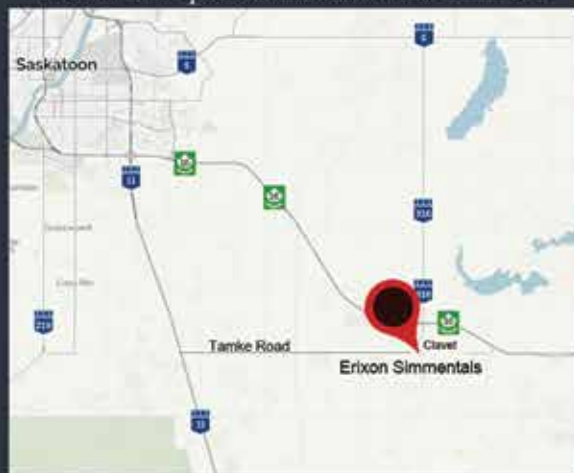
**MONDAY
FEBRUARY 28, 2022
1:00 P.M.**

LOCATION: at the farm Clavet, SK

From Saskatoon: 8 miles south
on Hwy 11; turn at Coop Cardlock
(Tamke Road); 7 miles east

From the south on Hwy 11: 11 miles north of
Dundurn on Hwy 11, turn at Coop Cardlock
(Tamke Road); 7 miles east

From Hwy 16: Take the Clavet west access
road, go 1 mile south to the "T"
intersection, turn east, go 1/4 mile, then
follow the speed curve south for 2 miles



Erixon Simmentals
can be found on Google Maps
under **Erixon Simmentals Inc.**

PLEASE JOIN US FOR LUNCH ON SALE DAY

Welcome
On behalf of Dave, myself, Griffin and Holden, I would like to welcome you, our fellow seed stock producers and commercial cattlemen to the 2022 edition of the Erixon Simmentals Bull & Female Sale. 2021 provided us all with some major challenges to overcome, but we are resilient people. 2022 brings us new goals, hope and a new perspective on life.

The herd is built around strong cow families that have been consistent over the years. We believe in the power of the momma cow, and her ability to produce by utilizing forages. Cattle are our sole income and each and every cow on the farm must pull her own weight. Our bulls and heifers come to you out of the industry's leading A.I sires and two of our own walking bulls. We take great pride in striving to find exciting new and upcoming sires. We have invested heavily in semen packages over the years and are very happy with the results. We are excited to get the bulls out and working for our customers. We have something for everyone. Reds, blacks, white faced, heifer bulls, calving easy cow bulls, performance bulls and the list goes on. Please call us and we can discuss the bulls in detail with you. The group of 5 heifers are out of our replacement pen. They are good honest heifers. All the pictures were taken in December. The last 2 weeks of December weren't ideal for picturing, so we do apologize for the dark, frosty pictures. We made sure to get a picture of each and every animal for your appraisal.

All the bulls and heifers are on a full herd health program and have been poured with Ivomec. The calves are developed on free choice hay and pail fed and then slowly transitioned onto a high roughage TMR ration that promotes growth and longevity. We feel that our bulls are well grown out and not carrying anymore condition than needed. At weaning they're put out on a grass field. Mid November is when we sort them into their winter pens by the sale barn.

If you can't make it to the sale we are more than happy to assist you in your purchase. Feel free to call Dave or I or any of the phone numbers listed for our sales staff. We have the full confidence in our sales staff and this is a free service to you. Not only are they here at sale time to analyze the bulls, they've seen them while they were sucking their dams. Your bids will be handled professionally and confidentially. The sale will be broadcasted live on dlms. We still highly encourage you to come see the bulls and use the services provided by our trusted sales management.

We look forward to hosting all our past, present and future customers at our sale facility on the farm. The bulls will continue to sell by live auction and ran through the sale ring for your appraisal. Join us for lunch prior to the sale and after for socializing, refreshments and snacks. Our friend and fellow cattleman Nolan Blair has graciously accepted our invitation to come perform a few songs after the sale. If you have any questions feel free to give us a call or stop by the farm anytime prior to the sale.

Cheers folks!

Krista



Sale Day Information

Sale Day Phones:

Dave Erixon	306.270.2893	Taylor Richards	306.821.4169
Krista Erixon	306.270.1263	Rob Voice	306.270.6082
Scott Bohrsen	403.370.3010	Martin Bohrsen	306.220.7901

Sale Staff

Auctioneer:

Ryan Dorran 403.507.6483

Ringmen:

Rod McLeod..... 403.540.7986

Taylor Richards..... 306.821.4169

Delivery Options

Option A: \$50 off per lot if picked up sale day.

Option B: Free on bulls to central points in Saskatchewan, Alberta and Manitoba. In most cases we will deliver the bull to your yard. Trucking will start immediately after the sale at seller's convenience.

Option C: Bulls may be left at the farm free of charge until April 15th, then pick up or delivery arrangements can be made.

We insist all purchases be insured while at Erixon Simmentals. All bulls and females become the risk of the buyer once sold. Erixon Simmentals will provide the utmost care of the animals that return to the farm.

Semen Collection

Erixon Simmentals reserves the right to collect semen on any bull sold through this sale. The semen collection will be at Erixon Simmentals expense and the buyers convenience. Any semen collected will be for Erixon Simmentals in herd use only.

Win a \$2000 Sale Credit

Purchase a bull from any current Saskatchewan member, and when the registration papers are transferred, your name is entered to win a \$2000 sale credit! The draw will be made at the SSA's annual general meeting in July and the lucky winner will have one year to use the credit at any public auction or private sale on bulls or females purchased from any current SSA member.

Guarantee:

All animals will carry the standard breeding guarantee as specified by the Canadian Simmental Association. If a problem occurs with your purchase, please notify us as soon as possible. A bull of equal value and quality will be supplied or a credit given towards the purchase of another Erixon bull.

Sight Unseen Program:

Every year more bulls are purchased sight unseen because of the increasing number of repeat customers and the fact that people are busy. Please call us or our knowledgeable sales staff and we would be happy to discuss the cattle in detail with you.

U.S. Buyers

Erixon Simmentals will do necessary testing at cost for export on bulls and females.

Liability:

All persons attend the sale at their own risk. The seller and facility owner assume no liability, legal or otherwise for any accidents that occur

Insurance:

Crossfield Agencies

Michelle Marko 1-587-999-6467

Accommodations:

Home Inn & Suites Saskatoon South 306-657-4663

Internet Bidding:

Internet Bidding Available

D L M S

www.dlms.ca

For more information Call DLMS Reps:
Whitney Bosovich 780.991-3025
Mark Shologan 780.699.5082

Offering

39 Red Yearling Bulls
14 Black Yearling Bulls
5 Replacement Heifers

The attention to detail and passion to raise the very best Simmental genetics in the industry runs very deep at Erixon Simmentals. Dave, Krista and the boys are a family that dedicate their livelihood to the cow/calf industry and strive to supply their valued customers with an exceptional product. We have the utmost respect for this family and their dedication to the Simmental breed as their values hold true to continually produce hard-working, productive, sound cattle that go out and work in the industry.

This set of bulls is one that all astute purebred and commercial cattleman need to lay eyes on for themselves. Cow families are very important here and stacking consistent pedigrees upon each other has been a priority as it gives more predictability in their breeding abilities. The bulls on offer have the Simmental performance backing them as these stout made, heavy muscled, long bodied, heavy haired, sound individuals are what the industry strives to source. The handful of replacement heifers are fresh in their condition which is ideal for the successful buyers and they're selected to showcase many of their important sire groups in this sale. They are the right kind and quality is very good in this group.

Dave & Krista truly put an immense amount of work and dedication into this program to source and breed the best cattle to market to their customers. If you're in the Clavet area, we heavily encourage you to see the sale bulls and heifers on offer along with the deep set of cows backing them. If you can't make it sale day, feel free to reach out to the Erixons or sales staff and we will represent your needs in a professional manner. As always, the Erixon family has the best hospitality and we hope you can join us on sale day to take it in with the impressive set of sale cattle on offer.

Best regards,

The Bohrsen Marketing team



BOHRSEN
MARKETING SERVICES



Scott Bohrsen
403-370-3010



Taylor Richards
306-821-4169



Martin Bohrsen
306-220-7901



Rob Voice
306-270-6082



Darryl Snider
780-385-5561



Jaxon Payne
306-830-0456



Cody Haney
403-845-8806



Jay Sibbald
403-899-2625

RR 4 - Site 7 - Box 28 - Olds, AB T4H 1T8
bohrrsonmarketing@gmail.com / www.bohrrson.com



Homo Polled
Purebred Bull

ERIXON
Lady **201H**

PG1348345
BOBE 201H
28 Dec 2020

The udder quality in this cow family is very strong! We have sold quite a few progeny out of the 41C cow as we have flushed her. We sold a full sib to 1F in the 2019 Border City Sale, a maternal sib in the 2020 Border City Sale and Erixon Lady 116H in the 2021 Border City Sale. 1F has a beautiful white blaze and will be one to watch in our herd for years to come. Her first calf was a standout and brought \$15,500. The gestation on 201H is shorter at 279 days.



Erixon Lady 116H - same cow family



Erixon Lady 31F - Full Sib to Dam

SVS BETTS 808F

BGS/BM CAPTAIN SCREAM 63D
WFL RED SAGE 506C

ERIXON LADY 1F

ERIXON WAR PAINT 42D
ERIXON LADY 41C

Act.	Adj.	Adj.			Canadian Simmental Association EPDs						
BW	205 wt	365 wt	CE		BW	WW	YW	MCE	MWW	Milk	
87	798	1320	9		3.3	83.6	123.3	7	68	26.2	



Homo Polled Purebred Bull

ERIXON
Lady **204H**

PG1348713 BOBE 204H 29 Dec 2020

WS EPIC E152

WS ALL ABOARD B80
WS MAJESTIC Z133

ERIXON LADY 40G

DOUBLE BAR D LIBERATOR 412E
ERIXON LADY 76B

Act.	Adj.	Adj.			Canadian Simmental Association EPD's						
BW	205 wt	365 wt	CE		BW	WW	YW	MCE	MWW	Milk	
70	851	1409	13.2		-1.2	83.2	128.7	7.2	67.7	26.1	

Calving Ease. He will work wonders if you're looking for a bull with some punch that will calve easy. 204H has some frame, is dark red and has really nice hair.



Homo Polled Purebred Bull

ERIXON
Lady **3J**

PG1348365 BOBE 3J 1 Jan 2021

WS EPIC E152

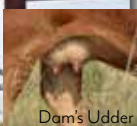
WS ALL ABOARD B80
WS MAJESTIC Z133

ERIXON LADY 15G

ERIXON MAGNUM 69D
LBCC EMBRACE PERFECTION 722E

Act.	Adj.	Adj.			Canadian Simmental Association EPD's						
BW	205 wt	365 wt	CE		BW	WW	YW	MCE	MWW	Milk	
86	841	1371	11.9		1.3	89.4	134.8	7.4	70.9	26.2	

These Epic sired calves have crazy EPD's, top 10% for CE and top 10% for WW and YW. You don't find curve benders like this everyday. The granddam of Lot 3 is the mother of Lot 34 in the sale. A maternal sib to 15G just sold at the Border City Sale in Lloyminster in December. This cow family is young but already doing a very good job here.



Dam's Udder



Dam



Homo Polled
Hetero Black
Purebred Bull
ERIXON
Lad 13J

BPG1348878
BOBE 13J
3 Jan 2021

Calving Ease. We think quite highly of this black blaze bull. Him and his dam have been at the top of the pack their entire lives. 74G was one of our favorite heifer calves and stood at the very top of the pen as a bred heifer. We think she will continue to raise some high end progeny over her lifetime.



Erixon Lady 24D - Granddam

WS PROCLAMATION E202

ERIXON LADY 74G

Act. BW	Adj. 205 wt	Adj. 365 wt	CE	Canadian BW	Simmental WW	Association YW	EPDs MCE	MWW	Milk
89	776	1395	9	3.5	93.5	138.8	6.2	74.7	27.9

CCR COWBOY CUT 5048Z
WS MISS SUGAR C4
RF CAPACITY 742E
ERIXON LADY 24D



Homo Polled
Purebred Bull
ERIXON
Lad 15J

PG1349039
BOBE 15J
4 Jan 2021

The profile, bone structure, overall mass, and attitude is very high end on this bull. He has a beautiful head shape. He's the real deal and we think the picture speaks for its self. 347A was a highlight red bred at McMillens the year we purchased her for \$16,000. His maternal brother was one of the highlight Liberator bulls in 2020, his full brother topped the sale in 2021 at \$17,000. This cow knows how to get it done right! 15J is an extremely well put together package.



SVS TYCOON 841F

MRL MISS 3347A

Act. BW	Adj. 205 wt	Adj. 365 wt	CE	Canadian BW	Simmental WW	Association YW	EPDs MCE	MWW	Milk
91	710	1246	6.3	3.3	81.1	120.9	1.6	70.7	30.1

SVS BROOKS 669D
SVS RED ANNIE 411B
LFE RED CASINO 3036X
MRL MISS 543U



MRL Miss 347A - Dam



Erixon Lad 79H - Full Brother



Homo Polled
Purebred Bull

ERIXON
Lad 17J

PG1348969

BOBE 17J

4 Jan 2021

Calving Ease. Here is another Epic bull that will calve easy and then you can watch his calves grow quickly. It has amazed us how much performance these Epics can have off of first calf heifers. 138G herself has a very well balanced udder with small teats. We think quite highly of this dark red fella. The last part of December was cloudy day after day, so we do apologize for the dark pictures.

WS EPIC E152

ERIXON LADY 138G

WS ALL ABOARD B80
WS MAJESTIC Z133
RUST HENN RAMBLER 6003
ERIXON LADY 132E

Act.	Adj.	Adj.		Canadian Simmental Association EPDs						
BW	205 wt	365 wt	CE	BW	WW	YW	MCE	MWW	Milk	
79	819	1408	11.9	0	85.5	128.9	6.7	66.7	23.9	



Homo Polled Purebred Bull

ERIXON
Lad 24J

PTG1349052 BOBE 24J 5 Jan 2021

SVS BETTS 808F

NUG MISS 513C

BGS/BM CAPTAIN SCREAM 63D
WFL RED SAGE 506C
IPU DIABLO 41Y
ERIXON LADY 86A

Act.	Adj.	Adj.		Canadian Simmental Association EPD's						
BW	205 wt	365 wt	CE	BW	WW	YW	MCE	MWW	Milk	
94	703	1242	6.8	4.5	79.7	118.9	6.1	64.6	24.7	

We thought very highly of 86A the day we sold her at Friday Night Lights. When we had the opportunity to buy her daughter 513C, we couldn't resist. The udder structure and teat size on 513C is top end. After seeing a few daughters off 513C come into production we decided to flush 513C. 24J is an embryo transplant calf.



Homo Polled Purebred Bull

ERIXON
Lad 30J

PG1348946 BOBE 30J 5 Jan 2021

SVS BETTS 808F

ERIXON LADY 106D

BGS/BM CAPTAIN SCREAM 63D
WFL RED SAGE 506C
MRC INVESTOR 60B
ERIXON LADY 29Y

Act.	Adj.	Adj.		Canadian Simmental Association EPD's						
BW	205 wt	365 wt	CE	BW	WW	YW	MCE	MWW	Milk	
95	774	1275	7.6	3.8	80.8	118.8	6.1	66.8	26.4	

106D has been good to us. She brings in a highly marketable calf every year. We sold a bred heifer off of her to MJT in the Border City. 30J has substance, frame and some really nice hair.



Erixon Lady 21F - Maternal Sib



Homo Polled
Hetero Black
Purebred Bull
ERIXON
Lad 25J

BPTG1349057
BOBE 25J
5 Jan 2021

613D or better known as Darlin' is a true beauty! She is nearly flawless in her design and was admired by many. 2 maternal sib were the lead off heifer calves at Friday Night Lights 2020 for \$45,000 and \$35,000. Fast forward to the fall of 2021.....2 full sibs to 25J were the lead off lots bringing \$280,000 and \$60,000. This cow knows how to get it done!



IRCC Darlin' - Dam



Erixon Lady 2J - Full Sib

MADER WALK THIS WAY 224B

NCB COBRA 47Y
MADER P IRON SUGAR 7X
MR HOC BROKER
DESTINY ODIN SHEA

IRCC DARLIN' 613D

Act.	Adj.	Adj.		Canadian Simmental Association EPDs					
BW	205 wt	365 wt	CE	BW	WW	YW	MCE	MWW	Milk
96	758	1294	9.7	1.7	90	134.1	6.6	73.7	28.7



Homo Polled Purebred Bull
ERIXON
Lad 33J

PG1349019 BOBE 33J 7 Jan 2021

DOUBLE BAR D LIBERATOR 412E

KWA LAW MAKER 59C
DOUBLE BAR D GALAXY 101X
IPU DIABLO 41Y
ERIXON MISS JAL 44P

ERIXON LADY 181C

Act.	Adj.	Adj.		Canadian Simmental Association EPD's					
BW	205 wt	365 wt	CE	BW	WW	YW	MCE	MWW	Milk
84	844	1410	8.1	3.4	72	114.1	4.3	64.8	28.8

This is one stretchy long sided bull. At the end of the day we all sell cattle by the pound and this fellow will add some extra punch to your program.



Hetero Polled Scurred Purebred Bull
ERIXON
Lad 38J

SG1348697 BOBE 38J 7 Jan 2021

WS EPIC E152

WS ALL ABOARD B80
WS MAJESTIC Z133
ERIXON WAR PAINT 42D
ERIXON LADY 27B

ERIXON LADY 28G

Act.	Adj.	Adj.		Canadian Simmental Association EPD's					
BW	205 wt	365 wt	CE	BW	WW	YW	MCE	MWW	Milk
84	859	1467	9.9	1.6	93.7	142.1	5.9	72.4	25.5

What a job this first calf heifer has done on this Epic sired bull. He is a powerhouse that has exceptional performance numbers with some built in calving ease. He will be one to push the scale down hard on sale day.





Homo Polled
Purebred Bull

ERIXON
Lady 40J

PG1348352
BOBE 40J
8 Jan 2021

Here is a real honest bull that will work on a variety of cows. He is well balanced, good haired and off a dark red Magnum daughter. One has to appreciate his muscle shape and fullness of rear quarter.

SVS BETTS 808F

ERIXON LADY 5F

BGS/BM CAPTAIN SCREAM 63D
WFL RED SAGE 506C
ERIXON MAGNUM 69D
ERIXON LADY 46C

Act.	Adj.	Adj.		Canadian Simmental Association EPDs					
BW	205 wt	365 wt	CE	BW	WW	YW	MCE	MWW	Milk
98	815	1453	8.7	3.9	88.8	129	6.2	68.6	24.2



Homo Polled Purebred Bull
ERIXON *Lady* 39J

PTG1349055 BOBE 39J 7 Jan 2021

SVS BETTS 808F

IRCC DARLIN' 613D

BGS/BM CAPTAIN SCREAM 63D
WFL RED SAGE 506C
MR HOC BROKER
DESTINY ODIN SHEA

Act.	Adj.	Adj.		Canadian Simmental Association EPD's					
BW	205 wt	365 wt	CE	BW	WW	YW	MCE	MWW	Milk
102	701	1272	7.6	3.9	87.8	127.7	5	68.7	24.8

613D or better known as Darlin' is a true beauty! IRCC Darlin' 613D made quite the flash in 2018 as she dominated the show ring out in Ontario and was named Grand Champion Female at the Royal. She then went on to be the Reserve Champion Female at Agribition and topped off her show career with being named top 10 in the Royal Bank Supreme. She is nearly flawless in her design and was admired by many. The cow family is top end on this bull. Keep the heifers off of him!



Erixon Lady 4H - Full Sib



Homo Polled/Homo Black Purebred Bull
ERIXON *Lady* 47J

BPG1348909 BOBE 47J 9 Jan 2021

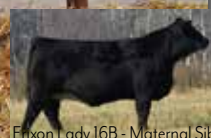
SPRINGCREEK MCNALLY 10G

ERIXON LADY 94Z

SPRINGCREEK DENALI 21E
SPRINGCREEK LINNETTE 149C
TRIPLE C SINGLETARY S3H
REMINGTON HONEY 46X

Act.	Adj.	Adj.		Canadian Simmental Association EPD's					
BW	205 wt	365 wt	CE	BW	WW	YW	MCE	MWW	Milk
104	879	1402	3.2	5	92.3	138	1.2	74.6	28.4

If you want to talk cow families, 47J is a great grandson out of the widely known HPF MS Honey. We were lucky to purchase 46X out of the Remington dispersal quite a few years back. A maternal sister to 47J was a leadoff bred in Simmsational selling for \$21,000 to Crossroad farms. 2 other maternal sibs have sold at Simmsational to Oberles and CS Livestock. The udder structure on this cow family has been phenomenal. Take a look at the pictures of the maternal sisters. We couldn't write a better history on 94Z if we tried. For a cow that has never been flushed, she has produced some dollar value in progeny and has more than exceeded our expectations. This bull comes to you with a great look, a stellar cow to back him and a pedigree that takes generations to build!



Erixon Lady 16B - Maternal Sib



Homo Polled
Purebred Bull

ERIXON *Lad* 60J

PG1348887
BOBE 60J
11 Jan 2021

82D is an embryo transplant off 133U and Capone. She crossed extremely well with Liberator and we think pretty highly of the dark red Liberator bull. Look at the cow family, muscle pattern, and performance. 60J will sit at the top of the pen and be one of the favorites on sale day. His full brother was a standout last year, bringing \$12,000. Buy with confidence!



Erixon Highroller - Maternal Sib to Dam



Erixon Lad 52H - Full Sib

DOUBLE BAR D LIBERATOR 412E

KWA LAW MAKER 59C
DOUBLE BAR D GALAXY 101X
MRL CAPONE 130B
ERIXON LADY 133U

ERIXON LADY 82D

Act. BW	Adj. 205 wt	Adj. 365 wt	CE	Canadian Simmental Association EPDs	BW	WW	YW	MCE	MWW	Milk
97	806	1425	7.4	3.7	81.4	128.9	2.7	70.6	29.9	



Homo Polled Purebred Bull

ERIXON *Lad* 51J

PG1348354 BOBE 51J 10 Jan 2021

SVS BETTS 808F

BGS/BM CAPTAIN SCREAM 63D
WFL RED SAGE 506C
WFL IDENTITY 23X
ERIXON LADY 45Z

ERIXON LADY 5B

Act. BW	Adj. 205 wt	Adj. 365 wt	CE	Canadian Simmental Association EPD's	BW	WW	YW	MCE	MWW	Milk
101	816	1384	8	4	83.6	121.7	7.2	66.3	24.5	

5B.....what an exceptional job she has done for us so far. She has produced two bulls previous to 51J who both were sold into purebred operations, one heifer calf into a purebred operation, and her other two daughters are in production here. We did flush one last spring. That is quiet the track record! 51J is very complete, has great hair and has been at the top end of the pack since the beginning.



Erixon Lad 29G - Maternal Sib



Homo Polled Purebred Bull

ERIXON *Lad* 53J

PG1348708 BOBE 53J 10 Jan 2021

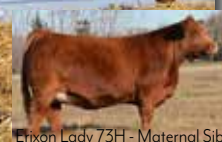
WHEATLAND KILL SWITCH

WHEATLAND CIRCUIT BREAKER
HR/RR MS CANDACE T73
MRC INVESTOR 60B
BAR 15 SPANISH EYES 8U

ERIXON LADY 37D

Act. BW	Adj. 205 wt	Adj. 365 wt	CE	Canadian Simmental Association EPD's	BW	WW	YW	MCE	MWW	Milk
94	750	1275	8.5	3.6	76.4	108.4	7.6	64.6	26.4	

We just sold a maternal sib at Friday Night Lights in December for \$22,000. She is a true powerhouse and we're excited to see what she accomplishes for her new owner. 37D has been very consistent raising a bull we sold, a daughter that we retained in the herd, the bred that sold at Friday Night Lights and then 53J.



Erixon Lady 73H - Maternal Sib



Homo Polled
Homo Black
Purebred Bull
ERIXON
Lad 65J

BPG1348996
BOBE 65J
12 Jan 2021

These Dealer sired females are some of our very, very favorite cows in the herd. We don't have many of them, but they're good. 146D is big volumed with a beautiful udder and sound feet and legs.

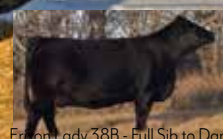


Springcreek McNally 10G - Sire

SPRINGCREEK MCNALLY 10G
ERIXON LADY 146D

SPRINGCREEK DENALI 21E
SPRINGCREEK LINNETTE 149C
ERIXON DEALER 63Z
ERIXON LADY 110Z

Act.	Adj.	Adj.		CE	Canadian	Simmental	Association	EPDs					
BW	205 wt	365 wt			BW	WW	YW	MCE	MWW	Milk			
104	760	1400		1.8	6.2	87.1	127.7	0.1	74.1	30.5			



Erison Lady 38B - Full Sib to Dam



Homo Polled/Homo Black Purebred Bull
ERIXON
Lad 61J

BPG1348725 BOBE 61J 11 Jan 2021

SPRINGCREEK MCNALLY 10G
ERIXON LADY 47B

SPRINGCREEK DENALI 21E
SPRINGCREEK LINNETTE 149C
HARVIE JDF WALLBANGER111X
EDN NIKA 37N

Act.	Adj.	Adj.		CE	Canadian	Simmental	Association	EPD's					
BW	205 wt	365 wt			BW	WW	YW	MCE	MWW	Milk			
102	742	1259		3.9	5.2	83.9	124.9	0.9	69.3	27.3			

He comes to you backed by one of the best cow families we have ever had on the farm. His granddam 37N is our now deceased Black Joker daughter who has done great things for our program. She sold 11 bulls to top end breeders and progressive cattlemen. Many daughters and granddaughter have topped sales such as Canadian Western Agribition, Friday Night Lights, Erison Simmentals Bull & Female Sale, and are in production on our farm. A maternal sib just sold at Border City in December to Dream Maker Cattle.



Homo Polled Purebred Bull

ERIXON
Lad 64J

PG1348932 BOBE 64J 12 Jan 2021

SVS BETTS 808F

BGS/BM CAPTAIN SCREAM 63D
WFL RED SAGE 506C
WFL WESTCOTT 24C
ERIXON LADY 71Y

ERIXON LADY 102E

Act.	Adj.	Adj.		CE	Canadian	Simmental	Association	EPD's					
BW	205 wt	365 wt			BW	WW	YW	MCE	MWW	Milk			
102	829	1363		6.4	5.3	93.5	140.5	5.2	73.2	26.4			

If your wanting a bull that has a lot of grow to him and will cover a good amount of cows, mark this guy down. Last year we sold 9 Betts sired bulls and have 17 up for your appraisal this year. They're mellow sided, big hiped and extremely good haired cattle.



Homo Polled
Hetero Black
Purebred Bull

ERIXON Lad 72J

BPG1349006
BOBE 72J
13 Jan 2021

Here is a very nice calving ease option on the black side. We think that he can be used in the heifer pen. This Proclamation bull has some top end EPD's. His CE, BWT and MCE are as good as they get and then he ranks top 15% for WW and YW.



WS PROCLAMATION E202

ERIXON LADY 161G

CCR COWBOY CUT 5048Z
WS MISS SUGAR C4
RF CAPACITY 742E
ERIXON LADY 181C

Act. BW	Adj. 205 wt	Adj. 365 wt	CE	Canadian Simmental Association EPD's					
78	753	1284	10.3	BW	WW	YW	MCE	MWW	Milk
				2	87.1	128.5	7.3	75.6	32



Homo Polled/Hetero Black Purebred Bull

ERIXON Lad 67J

BPG1349027 BOBE 67J 12 Jan 2021

SPRINGCREEK MCNALLY 10G

ERIXON LADY 195E

SPRINGCREEK DENALI 21E
SPRINGCREEK LINNETTE 149C
TNGL GRAND FORTUNE Z467
ERIXON LADY 126Y

Act. BW	Adj. 205 wt	Adj. 365 wt	CE	Canadian Simmental Association EPD's					
96	794	1396	4.2	BW	WW	YW	MCE	MWW	Milk
				4.6	86.6	129.2	1.6	75.8	32.5

67J is out of one really good cow family. His granddam is Erixon Lady 126Y who we flushed, showed and she made the top 10 in the RBC Supreme.



Homo Polled Purebred Bull

ERIXON Lad 68J

PG1348703 BOBE 68J 12 Jan 2021

SVS BETTS 808F

ERIXON LADY 35Z

BGS/BM CAPTAIN SCREAM 63D
WFL RED SAGE 506C
KOP CROSBY 137W
ERIXON LADY 4T

Act. BW	Adj. 205 wt	Adj. 365 wt	CE	Canadian Simmental Association EPD's					
96	746	1216	6	BW	WW	YW	MCE	MWW	Milk
				5.1	82.1	120.6	7.3	68.1	27

Make sure you have this bull marked on sale day! 35Z is a cow that owes us nothing. She has raised 8 calves to date and some of the highlights would be.... Erixon Lady 56D who sold at Friday Night Lights for \$21,000, a full sister to 68J was a highlight of our replacement pen and has just calved. The cow family backing 68J is as solid as they come.



Erixon Lady 56D - Maternal Sib



25

Homo Polled
Purebred Bull

ERIXON
Lady 74J

PG1348922
BOBE 74J
13 Jan 2021

74J is a full sib by blood to Erixon Lady 113H who we just sold at Friday Night Lights in December. This cow family does it right time and time again, they have muscle shape, are dark hided, and have nice udders. We would be keeping the replacement females off this guy.



Erixon Lady 113H - Full Sib

SVS BETTS 808F

BGS/BM CAPTAIN SCREAM 63D
WFL RED SAGE 506C
MRL CAPONE 130B
ERIXON LADY 133U

ERIXON LADY 97D

Act.	Adj.	Adj.		Canadian Simmental Association EPDs					
BW	205 wt	365 wt	CE	BW	WW	YW	MCE	MWW	Milk
103	821	1375	4.7	5.5	89.9	133.8	1.7	68.5	23.5



26

Homo Polled Purebred Bull

ERIXON
Lady 85J

PG1349001 BOBE 85J 15 Jan 2021

DOUBLE BAR D LIBERATOR 412E

KWA LAW MAKER 59C
DOUBLE BAR D GALAXY 101X
MRL PRETTY RECKLESS 68B
ERIXON LADY 133U

ERIXON LADY 155F

Act.	Adj.	Adj.		Canadian Simmental Association EPD's					
BW	205 wt	365 wt	CE	BW	WW	YW	MCE	MWW	Milk
96	719	1282	5.1	4.4	78.5	121.7	0.9	63.1	23.8

Here is yet another bull that stems back to the donor cow 133U. A granddaughter off of 133U just sold for \$22,000 at Friday Night Lights in December.



27

Homo Polled Purebred Bull

ERIXON
Lady 91J

PG1348367 BOBE 91J 17 Jan 2021

DOUBLE BAR D LIBERATOR 412E

KWA LAW MAKER 59C
DOUBLE BAR D GALAXY 101X
KUNTZ SHERIFF 8A
ERIXON LADY 75B

ERIXON LADY 15D

Act.	Adj.	Adj.		Canadian Simmental Association EPD's					
BW	205 wt	365 wt	CE	BW	WW	YW	MCE	MWW	Milk
89	733	1411	10.9	1.1	74.8	120.8	5.2	67.4	30

When you analyze this bull one of the first things that will strike you is his presence. He is very extended through his front third. He is built to calve easy, his EPD's say calving ease and his dam is sired by the calving ease specialist Sheriff.



Homo Polled
Hetero Black
Purebred Bull

ERIXON

Lady 77J

BPG1348728

BOBE 77J

14 Jan 2021

77J is sired by another great cow who looks the part and can raise the good ones. A maternal sib sold in the prestigious Cobra event. Another maternal sib just calved, she is my favorite black replacement heifer. We think the picture of his dam and maternal sib show you the depth of quality in his pedigree. If you want to raise females, make sure you mark this fellow down.



Erixon Lady 48C - Dam



Erixon Lady 134E - Maternal Sib

SPRINGCREEK MCNALLY 10G

SPRINGCREEK DENALI 21E
SPRINGCREEK LINNETTE 149C

ERIXON LADY 48C

ERIXON DEALER 63Z
ERIXON LADY 112Y

Act.	Adj.	Adj.		Canadian Simmental Association EPDs					
BW	205 wt	365 wt	CE	BW	WW	YW	MCE	MWW	Milk
98	797	1384	2.2	6	93.5	140.3	-0.7	77.3	30.5



Homo Polled Purebred Bull

ERIXON *Lady* 99J

PG1348371 BOBE 99J 18 Jan 2021

DOUBLE BAR D LIBERATOR 412E

KWA LAW MAKER 59C
DOUBLE BAR D GALAXY 101X

ERIXON LADY 18F

ERIXON MAGNUM 69D
ERIXON LADY 66D

Act.	Adj.	Adj.		Canadian Simmental Association EPD's					
BW	205 wt	365 wt	CE	BW	WW	YW	MCE	MWW	Milk
88	734	1291	11.5	1.3	71.2	110.2	5.8	62.4	26.8

Calving ease is built into this pedigree. Liberator, Law Maker, Magnum, Sheriff and Capone. 18F had a heifer calf in the sale last year, she went out to Quebec, we've gotten many positive reports throughout the year from them.



Erixon Lady 42H - Maternal Sib



Homo Polled/Homo Black Purebred Bull

ERIXON *Lady* 105J

BPG1349026 BOBE 105J 19 Jan 2021

SPRINGCREEK MCNALLY 10G

SPRINGCREEK DENALI 21E
SPRINGCREEK LINNETTE 149C

ERIXON LADY 191C

SPRINGCREEK OLYMPIAN 66A
ERIXON LADY 126Y

Act.	Adj.	Adj.		Canadian Simmental Association EPD's					
BW	205 wt	365 wt	CE	BW	WW	YW	MCE	MWW	Milk
94	768	1296	3.5	4.9	84.5	121.8	0.7	68.6	26.3

The granddam of 105J, Erixon Lady 126Y was the anchor of our 2013 show string. She had many accomplishments throughout the year, with the grandest being named top 10 in the Royal Bank Cup Supreme at Agribition. 126Y sure raised us some good ones over the years! 191C will continue in her footsteps as she looks just like her dam and cranked out one good McNally 10G sired bull calf. Lots 23, 32 and 30 are ¾ brothers.





Homo Polled
Purebred Bull

ERIXON
Lad 78J

PG1348960
BOBE 78J
14 Jan 2021

This is a herd bull that has stood out from the beginning. We love his color, growth, stretch and head shape. His hoof structure is damn good, its big with lots of heel and shaped just right. I think the picture of his dam 117E speaks for itself. This cow family knows how to put an udder under one.



November photo



Erixon Lady 117E - Dam

SVS TYCOON 841F

SVS BROOKS 669D
SVS RED ANNIE 411B
WFL WESTCOTT 24C
ERIXON LADY 31A

ERIXON LADY 117E

Act.	Adj.	Adj.		Canadian Simmental Association EPDs						
BW	205 wt	365 wt	CE	BW	WW	YW	MCE	MWW	Milk	
103	863	1444	3.9	5.6	99.2	147.7	0.5	76.7	27.1	



Erixon Lady 126Y - Granddam



Homo Polled/Homo Black Purebred Bull

ERIXON
Lad 107J

BPG1349029 BOBE 107J 20 Jan 2021

SPRINGCREEK MCNALLY 10G

SPRINGCREEK DENALI 21E
SPRINGCREEK LINNETTE 149C
WS STEPPING STONE B44
ERIXON LADY 126Y

ERIXON LADY 200E

Act.	Adj.	Adj.		Canadian Simmental Association EPD's						
BW	205 wt	365 wt	CE	BW	WW	YW	MCE	MWW	Milk	
93	787	1315	4.8	3.9	85.2	128.5	0.7	74.3	31.7	

It feels like our white faced cows tend to have solid colored calves. It is hard to keep that white face on these bulls. That being said, 200E is a clean fronted big bodied white faced cow that has a farm favorite bred heifer.



Homo Polled Purebred Bull

ERIXON
Lad 108J

PG1348378 BOBE 108J 20 Jan 2021

SVS BETTS 808F

BGS/BM CAPTAIN SCREAM 63D
WFL RED SAGE 506C
R PLUS RELOAD 2006Z
SKORS MS DREAM ON 103T

SKORS TRINITY 23E

Act.	Adj.	Adj.		Canadian Simmental Association EPD's						
BW	205 wt	365 wt	CE	BW	WW	YW	MCE	MWW	Milk	
102	774	1396	6.6	4.4	84.9	124.6	4.5	65	22.5	

23E was purchased in the fall of 2019 out of the Skor dispersal. We knew that we wanted to purchase a few top end young red cows from them and went out to the farm early on to have a good look at things. 23E was a standout in our minds and we are excited to have her in our herd.



Homo Polled
Purebred Bull

ERIXON *Lad* 89J

PG1349043
BOBE 89J
17 Jan 2021

89J is a bull that constantly jumps out everyday from the pack. He is easy on the eyes, packed full of red meat and is backed by a cow who knows how to get the job done right! 722E is proving to be quite the producer. We sold a bred heifer off of her at Border City in December and she was our second high seller. 89J himself is very soft side, has exceptional hair and has been a favorite of ours.



Erixon Lady 149H - Maternal Sib



November photo

SVS BETTS 808F

BGS/BM CAPTAIN SCREAM 63D
WFL RED SAGE 506C

LBCC EMBRACE PERFECTION 722E

ERIXON JOKERS WILD 117B
LBCC BIG PERFECTION 420B

Act.	Adj.	Adj.		Canadian Simmental Association EPD's					
BW	205 wt	365 wt	CE	BW	WW	YW	MCE	MWW	Milk
97	859	1421	7.3	5.2	95.9	142.3	6.3	74.5	26.5



Hetero Polled Purebred Bull

ERIXON *Lad* 112J

PG1348964 BOBE 112J 21 Jan 2021

DOUBLE BAR D LIBERATOR 412E

KWA LAW MAKER 59C
DOUBLE BAR D GALAXY 101X
ERIXON HIGH ROLLER 143B
ERIXON LADY 77Z

ERIXON LADY 1315D

Act.	Adj.	Adj.		Canadian Simmental Association EPD's					
BW	205 wt	365 wt	CE	BW	WW	YW	MCE	MWW	Milk
102	750	1340	6.2	4.2	77.4	120.2	1.9	70.6	31.9

112J has been real solid since the beginning and it has been a joy to watch him develop. These Liberator bulls are darn good and we don't think you can go wrong with adding one to your bull battery.



Homo Polled Purebred Bull

ERIXON *Lad* 116J

PG1348366 BOBE 116J 22 Jan 2021

SVS TYCOON 841F

SVS BROOKS 669D
SVS RED ANNIE 411B
MAF R HORIZON 7Y
IPU 68M RED ESSENCE 217X

IPU MS. HORIZON 15B

Act.	Adj.	Adj.		Canadian Simmental Association EPD's					
BW	205 wt	365 wt	CE	BW	WW	YW	MCE	MWW	Milk
94	719	1201	5.1	4.2	92.1	123.6	2	70.1	24

We thought very highly of this young Horizon daughter the day we purchased her from Labatte Simmentals. So broody yet so much class and eye appeal would best describe this leading female. She comes out of an outstanding cow family, the Pocahontas 68M family. Boy, she did not disappoint us the first time around, raising Erixon Magnum 69D! He was a \$32,000 high seller that we A.I'ed to ourselves. Another Liberator sired bull brought \$11,500. She also has a beautiful Erixon War Paint cow that just calved for the second time. Everything in this pedigree is put together right, but more importantly the look is there.





Homo Polled
Purebred Bull

ERIXON
Lad 104J

PG1348719
BOBE 104J
19 Jan 2021

44B is the dam of one of our favorite young and up coming cows. Actually, she is a full sib to 104J. 104J is as good and honest of a bull that you will find. These Liberator bulls have been in high demand the past few years and we have a good bunch of calves on the ground again this year.



Double Bar D Liberator 412E - Sire

DOUBLE BAR D LIBERATOR 412E
ERIXON LADY 44B

KWA LAW MAKER 59C
DOUBLE BAR D GALAXY 101X
ERIXON WELLINGTON 133W
ERIXON LADY 7Y

Act.	Adj.	Adj.			Canadian Simmental Association EPDs					
BW	205 wt	365 wt	CE		BW	WW	YW	MCE	MWW	Milk
93	821	1280	5.4		3.8	82.8	135.1	1.6	73.2	31.8



Homo Polled Purebred Bull

ERIXON
Lad 121J

PG1348873 BOBE 121J 22 Jan 2021

SVS BETTS 808F

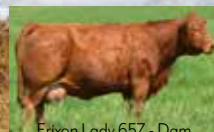
BGS/BM CAPTAIN SCREAM 63D
WFL RED SAGE 506C

ERIXON LADY 65Z

KOP CROSBY 137W
ERIXON LADY 2P

Act.	Adj.	Adj.			Canadian Simmental Association EPD's					
BW	205 wt	365 wt	CE		BW	WW	YW	MCE	MWW	Milk
103	777	1324	6.3		4.8	81.8	120.4	7.2	68.7	27.8

Sometimes we question whether or not we should catalogue the bulls by cow families. We strongly believe that a great cow family needs to stand behind any cattle purchase. 65Z is part of a great cow family! Buy yourself a Betts sired bull, the daughters were in very high demand during the 2021 fall female sale run.



Erixon Lady 65Z - Dam



Homo Polled Purebred Bull

ERIXON
Lad 125J

PG1348356 BOBE 125J 23 Jan 2021

WHEATLAND KILL SWITCH

WHEATLAND CIRCUIT BREAKER
HR/RR MS CANDACE T73

ERIXON LADY 9C

LFE RED CASINO 3036X
ERIXON LADY 31A

Act.	Adj.	Adj.			Canadian Simmental Association EPD's					
BW	205 wt	365 wt	CE		BW	WW	YW	MCE	MWW	Milk
101	706	1295	8.9		3.9	72.1	108.1	6.6	61.4	25.3

We were able to purchase some semen on Wheatland Kill Switch to breed a select group of cows. The Kill Switch bulls calved with ease, have large scrotals and substance. We have calved females off of him and sure are happy with their udder structure. We sold a full brother to 125J in last year's sale.



Homo Polled
Purebred Bull

ERIXON *Lad* 110J

PG1348355
BOBE 110J
20 Jan 2021

8A, what can we say??? She has done it all for us and raised some high valued progeny. At Simmsational 2017 she raised a \$21,000 bred heifer going to Mader Ranches. Her \$16,000 valued son, Erixon Lad 127E led off the 2018 edition of the bull sale going to Little Willow Creek. She has also raised a top end bull in the 2019 sale. There is a Liberator sired young cow in the herd, she is beautiful! Exciting times ahead! 110J is pretty damn special.



Erixon Lady 121D - Maternal Sib



Erixon Lad 127E - Maternal Sib



SVS BETTS 808F

ERIXON LADY 8A

Act. BW	Adj. 205 wt	Adj. 365 wt	CE
103	835	1424	5.9

BGS/BM CAPTAIN SCREAM 63D
WFL RED SAGE 506C
LFE BS LEWIS 322U
ERIXON LADY 83U

Canadian Simmental Association EPDs					
BW	WW	YW	MCE	MWW	Milk
5.8	92.6	136.9	4.6	71.8	25.5



Homo Polled/Hetero Black Purebred Bull

ERIXON *Lad* 139J

BPRS1348895 BOBE 139J 27 Jan 2021

SPRINGCREEK MCNALLY 10G

ERIXON LADY 89F

SPRINGCREEK DENALI 21E
SPRINGCREEK LINNETTE 149C
ERIXON RELENTLESS 110D
ERIXON LADY 151X

Act. BW	Adj. 205 wt	Adj. 365 wt	CE	Canadian Simmental Association EPD's					
BW	205 wt	365 wt	CE	BW	WW	YW	MCE	MWW	Milk
99	765	1327	2.1	5.2	85.3	123.2	0.2	67.4	24.7

Length of body is always an asset when raising cattle. Here is a bull with a nice birth weight and lots of length of body.



Erixon Lady 304Y - Great Granddam



Homo Polled/Hetero Black Purebred Bull

ERIXON *Lad* 141J

BPG1349010 BOBE 141J 27 Jan 2021

SPRINGCREEK MCNALLY 10G

ERIXON LADY 166D

SPRINGCREEK DENALI 21E
SPRINGCREEK LINNETTE 149C
MRL PRETTY RECKLESS 68B
ERIXON LADY 51A

Act. BW	Adj. 205 wt	Adj. 365 wt	CE	Canadian Simmental Association EPD's					
BW	205 wt	365 wt	CE	BW	WW	YW	MCE	MWW	Milk
103	816	1342	1.5	6	92.9	131.4	0.9	71.5	25

141J stems back to our donor cow 133U. If you browse through the footnotes you will note that numerous bulls stem back to her. 166D herself raised an impressive Capacity heifer calf that sold in this sale last year for \$7000.





Homo Polled
Purebred Bull

ERIXON
Lad 118J

PG1349022

BOBE 118J

22 Jan 2021

We feel that our cattle are quite easy to work with and have very good dispositions. This guy is no exception. 118J is a true performance type of bull. He has length, frame, capacity and pushes the scale down.

SVS BETTS 808F

ERIXON LADY 182F

BGS/BM CAPTAIN SCREAM 63D
WFL RED SAGE 506C
WFL WESTCOTT 24C
ERIXON LADY 103X

Act.	Adj.	Adj.		Canadian Simmental Association EPDs					
BW	205 wt	365 wt	CE	BW	WW	YW	MCE	MWW	Milk
103	880	1362	5.4	5.5	94.7	137.9	3.2	73.4	26



Hetero Polled Purebred Bull

ERIXON
Lad 144J

PG1348363 BOBE 144J 29 Jan 2021

WHEATLAND KILL SWITCH

ERIXON LADY 14D

WHEATLAND CIRCUIT BREAKER
HR/RR MS CANDACE T73
ERIXON REVELSTOCK 41A
ERIXON LADY 27W

Act.	Adj.	Adj.		Canadian Simmental Association EPD's					
BW	205 wt	365 wt	CE	BW	WW	YW	MCE	MWW	Milk
101	800	1219	4.4	5.2	81.9	124.1	1.4	70.9	29.9

144J is a lower set, wide topped bull that is very easy feeding. He has a solid foundation from the ground up. He will add some stoutness to your cow herd as his dam is a big middled cow.



Homo Polled/Homo Black Purebred Bull

ERIXON
Lad 146J

BPG1348945 BOBE 146J 30 Jan 2021

SPRINGCREEK MCNALLY 10G

ERIXON LADY 106C

SPRINGCREEK DENALI 21E
SPRINGCREEK LINNETTE 149C
FBF1 COMBUSTIBLE
REMINGTON DUKE 113W

Act.	Adj.	Adj.		Canadian Simmental Association EPD's					
BW	205 wt	365 wt	CE	BW	WW	YW	MCE	MWW	Milk
97	769	1345	6.5	4	82.9	124.8	2.6	66	24.5

106C is a long spined cow with a real clean cut elongated neck. She also has a blaze face. There is a lot of good in this McNally bull. The McNally sire group has stretch and grow to them.



Homo Polled
Purebred Bull

ERIXON *Lady* 128J

PG1349190
BOBE 128J
24 Jan 2021

204F is a summer born female. Being off age, this makes 128J her first calf. She has done an excellent job producing this one. 204F is a direct daughter out of Erixon Lady 41C who we have flushed and sold some exceptional females out of at Border City.



Erixon Lady 31F - Maternal Sib to Dam



SVS BETTS 808F

ERIXON LADY 204F

BGS/BM CAPTAIN SCREAM 63D
WFL RED SAGE 506C
SPRINGCREEK BLUE CHIP 9D
ERIXON LADY 41C

Act. BW	Adj. 205 wt	Adj. 365 wt	CE	Canadian Simmental Association EPDs					
84	773	1309	8.8	BW	WW	YW	MCE	MWW	Milk
				3.6	85.5	127.9	7.8	68.8	26



Homo Polled Purebred Bull

ERIXON *Lady* 148J

PG1348995 BOBE 148J 2 Feb 2021

SVS TYCOON 841F

ERIXON LADY 146A

SVS BROOKS 669D
SVS RED ANNIE 411B
WFL IDENTITY 23X
ERIXON LADY 2P

Act. BW	Adj. 205 wt	Adj. 365 wt	CE	Canadian Simmental Association EPD's					
102	752	1238	6.2	BW	WW	YW	MCE	MWW	Milk
				4	81.7	114.4	3.9	70	29.1

146A is a direct daughter of our great 2P cow. There are numerous bulls in the sale that go back to good old 2P. Maternal strength is built into this pedigree from top to bottom. There is no way you can go wrong on this bull, he's out of a great cow family, and sired by Tycoon. His full brother was one of the high end bulls last year.



Erixon Lady 2P - Granddam



Homo Polled Purebred Bull

ERIXON *Lady* 154J

PG1348376 BOBE 154J 6 Feb 2021

SVS TYCOON 841F

ERIXON LADY 22D

SVS BROOKS 669D
SVS RED ANNIE 411B
KUNTZ SHERIFF 8A
ERIXON LADY 25B

Act. BW	Adj. 205 wt	Adj. 365 wt	CE	Canadian Simmental Association EPD's					
96	846	1336	8.3	BW	WW	YW	MCE	MWW	Milk
				2.5	91.9	136.5	3.4	76	30

22D has an udder of perfection! We love the design of this cow so much. The bull we walk in our own heifer pen, Erixon Infinite 16F is off of her. Tycoon crossed really nice with this young Sheriff sired cow. A full sister calved at the beginning of January to 154J and she's absolutely beautiful.



Erixon Lady 22D - Dam



Homo Polled
Purebred Bull

ERIXON
Lad 171J

PTG1349065

BOBE 171J

15 Feb 2021

We think 171J will turn some heads on sale day. Dave and I both think quiet highly of this mid February born bull. He is out of our flush cow 31D who we absolutely love! Her daughters in our herd are young and we believe they will do great things in our herd in the years to come. 171J is dark red, very cool haired, big hiped and has looked the part since the beginning. And a splash of white on his face to top it off.



November photo



Erixon Lady 31D - Dam

SVS BETTS 808F

BGS/BM CAPTAIN SCREAM 63D

WFL RED SAGE 506C

NUG ROYAL RED 324A

RF SCREAM 215Z

ERIXON LADY 31D

Act. BW	Adj. 205 wt	Adj. 365 wt	CE	Canadian BW	Simmental WW	Association YW	EPDs MCE	EPDs MWW	Milk
99	870	1521	6.4	4.8	89.9	135.2	4.8	65.6	20.6



Homo Polled Purebred Bull

ERIXON
Lad 164J

PTG1349064 BOBE 164J 12 Feb 2021

SVS BETTS 808F

BGS/BM CAPTAIN SCREAM 63D

WFL RED SAGE 506C

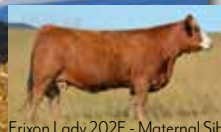
NUG ROYAL RED 324A

RF SCREAM 215Z

ERIXON LADY 31D

Act. BW	Adj. 205 wt	Adj. 365 wt	CE	Canadian BW	Simmental WW	Association YW	EPDs MCE	EPDs MWW	Milk
92	810	1261	6.4	4.8	89.9	135.2	4.8	65.6	20.6

We have been flushing 31D and her first females are in production. She is a daughter of the great Scream cow. We have 3 full sibs that were born in the summer of 2021 to 164J. They're hairy and darn good stock. Keep in mind that this is a mid February born bull.



Erixon Lady 202E - Maternal Sib



Homo Polled/Hetero Black 7/8 Bull

ERIXON
Lad 167J

BPRS1348735 BOBE 167J 13 Feb 2021

SPRINGCREEK MCNALLY 10G

SPRINGCREEK DENALI 21E

SPRINGCREEK LINNETTE 149C

ERIXON DEALER 63Z

ERIXON LADY 151X

ERIXON LADY 56C

Act. BW	Adj. 205 wt	Adj. 365 wt	CE	Canadian BW	Simmental WW	Association YW	EPDs MCE	EPDs MWW	Milk
101	905	1443	4.1	5.1	95.9	145	1.2	76.4	28.4

167J is a long sided, stretchy type of bull. We would like to note that he is registered as 7/8. His dam 56C is as tanky and capacious as they come. She stems back to an Angus cow that Krista had.



Homo Polled
Purebred Bull

ERIXON LADY 176J

PG1349188
BOBE 176J
19 Feb 2021

203F is a daughter of the famous Sage cow. Sage has lifetime earnings of over \$500,000 in progeny and embryo sales. We purchased some embryos that were put in during the summer and that is how we got the resulting cow 203F. Being off age makes this her first calf.



WFL Red Sage 506C - Granddam

ERIXON CONVICTED 80G

ERIXON LADY 203F



WHEATLAND KILL SWITCH
ERIXON LADY 67B
SPRINGCREEK BLUE CHIP 9D
WFL RED SAGE 506C

Act.	Adj.	Adj.		Canadian Simmental Association EPDs					
BW	205 wt	365 wt	CE	BW	WW	YW	MCE	MWW	Milk
86	810	1319	10.2	2.2	82.7	117.6	9.1	68.9	27.5



Homo Polled Purebred Bull

ERIXON LADY 173J

PG1348883 BOBE 173J 17 Feb 2021

ERIXON CONVICTED 80G

ERIXON LADY 78F

WHEATLAND KILL SWITCH
ERIXON LADY 67B
WFL WESTCOTT 24C
ERIXON LADY 31D

Act.	Adj.	Adj.		Canadian Simmental Association EPD's					
BW	205 wt	365 wt	CE	BW	WW	YW	MCE	MWW	Milk
91	798	1420	8.4	3	86.4	125.9	5.6	68.3	25.1

A great bull needs a great cow family backing him. The Scream cow family is widely known in the Simmental industry and you will hear alot more about how they are working in our herd in the next few years. We have been flushing the granddam of 173J and are starting to get some daughters off her in production.



Homo Polled Purebred Bull

ERIXON LADY 175J

PG1349024 BOBE 175J 19 Feb 2021

DOUBLE BAR D LIBERATOR 412E

ERIXON LADY 182D

KWA LAW MAKER 59C
DOUBLE BAR D GALAXY 101X
MRL PRETTY RECKLESS 68B
ERIXON LADY 133U

Act.	Adj.	Adj.		Canadian Simmental Association EPD's					
BW	205 wt	365 wt	CE	BW	WW	YW	MCE	MWW	Milk
95	845	1415	5.8	4	82.8	127.1	1.2	66.8	25.4

Another bull that stems back to our donor cow 133U. 175J is dark red and has a nice birthweight and is backed by a great cow family.





Homo Polled
Purebred Heifer

ERIXON

Lady **203H**

PG1348920

BOBE 203H

29 Dec 2020

The name Erixon Lady 41C has come up numerous times in the bull footnotes. She is the granddam of 203H. 203H is also the first calf 97G has raised. Wow, has she ever exceeded our expectations and packed the punch on this heifer calf in terms of frame, length, weight and depth of side. We need to start hanging on more tightly to the females out of this cow family in the future.

WS EPIC E152

ERIXON LADY 97G

WS ALL ABOARD B80
WS MAJESTIC Z133
ERIXON MAGNUM 69D
ERIXON LADY 41C

Act. BW	Adj. 205 wt	Adj. 365 wt	CE	Canadian Simmental Association EPDs						
				BW	WW	YW	MCE	MWW	Milk	
89	658	1141	10.6	2.2	82.8	125.5	6.5	67.5	26.1	



Homo Polled
Purebred Heifer

ERIXON

Lady **50J**

PG1348953

BOBE 50J

10 Jan 2021

111Z raised a \$18,000 heifer calf that we sold in Friday Night Lights in 2015. This group of heifers aren't over conditioned and will fit into everyone's replacement pen very nicely. We think very highly of Tycoon and have a large group of calves on the ground in 2022 sired by him.



Erixon Lady 7C - Maternal Sib

SVS TYCOON 841F

ERIXON LADY 111Z

SVS BROOKS 669D
SVS RED ANNIE 411B
KOP CROSBY 137W
ERIXON LADY - 8W

Act. BW	Act. WW	Act. YW	CE	Canadian Simmental Association EPDs						
				BW	WW	YW	MCE	MWW	Milk	
85	835	998	6.8	3.3	88.8	121.3	5.5	72.5	28.1	



Homo Polled
Purebred Heifer

ERIXON *Lady* 142J

BPG1348716
BOBE 142J
29 Jan 2021

Here is a heifer that is fluid in her make up and movement while showing loads of muscle shape and width of hip. She has the ability to fit into any program that is looking to raise solid breeding bulls or functional replacement females. Her teat structure looks extremely good.



SPRINGCREEK MCNALLY 10G
ERIXON LADY 43D

SPRINGCREEK DENALI 21E
SPRINGCREEK LINNETTE 149C
TNGL GRAND FORTUNE Z467
ERIXON LADY 89B

Act. BW	Adj. 205 wt	Adj. 365 wt	CE	Canadian Simmental Association EPDs					
BW	205 wt	365 wt	CE	BW	WW	YW	MCE	MWW	Milk
97	724	1086	5.6	4	85.9	123.6	2.8	71.5	28.5



Homo Polled Purebred Heifer

ERIXON *Lady* 52J

PG1348942 BOBE 52J 10 Jan 2021

WS EPIC E152

WS ALL ABOARD B80
WS MAJESTIC Z133
WHEATLAND KILL SWITCH
ERIXON LADY 37B

ERIXON LADY 105G

Act. BW	Adj. 205 wt	Adj. 365 wt	CE	Canadian Simmental Association EPD's					
BW	205 wt	365 wt	CE	BW	WW	YW	MCE	MWW	Milk
74	745	1044	11.9	0.4	90.2	135.3	8	74	28.9

Epic is a true curve bender. Check out the EPD's on this heifer, she ranks in the top 10% for CE, MCE and BWT and top 10% for WW and YW. If you want a solid heifer that will give you no fuss and raise a calf that pays the bills, 52J is a safe bet. Her dam is as dark red and hairy as you can make them.



Polled Purebred Heifer

ERIXON *Lady* 137J

PG1348999 BOBE 137J 26 Jan 2021

WS EPIC E152

WS ALL ABOARD B80
WS MAJESTIC Z133
WHEATLAND KILL SWITCH
ERIXON LADY 39B

ERIXON LADY 150G

Act. BW	Adj. 205 wt	Adj. 365 wt	CE	Canadian Simmental Association EPD's					
BW	205 wt	365 wt	CE	BW	WW	YW	MCE	MWW	Milk
83	740	1076	9.9	1.9	91.2	137.8	6	72.7	27.1

Epic is a calving ease specialist that we have used on the heifers for several years. We are just calving the first daughters out of him and are very happy. 137J has a nice sweep of rib, soft center and style. Take a look at the picture of her dam as a bred heifer, she's a very nice young cow.





RR 4 - SITE 7 - BOX 28 :: OLDS, AB :: T4H 1T8

If you wish to stop receiving catalogues from BMS,
please email jodi@bohrson.com or call/text
403-519-3515 to be removed from the mailing list.



RETURN POSTAGE GUARANTEED
PORT DE RETOUR GARANTI



Integrity • Commitment • Quality